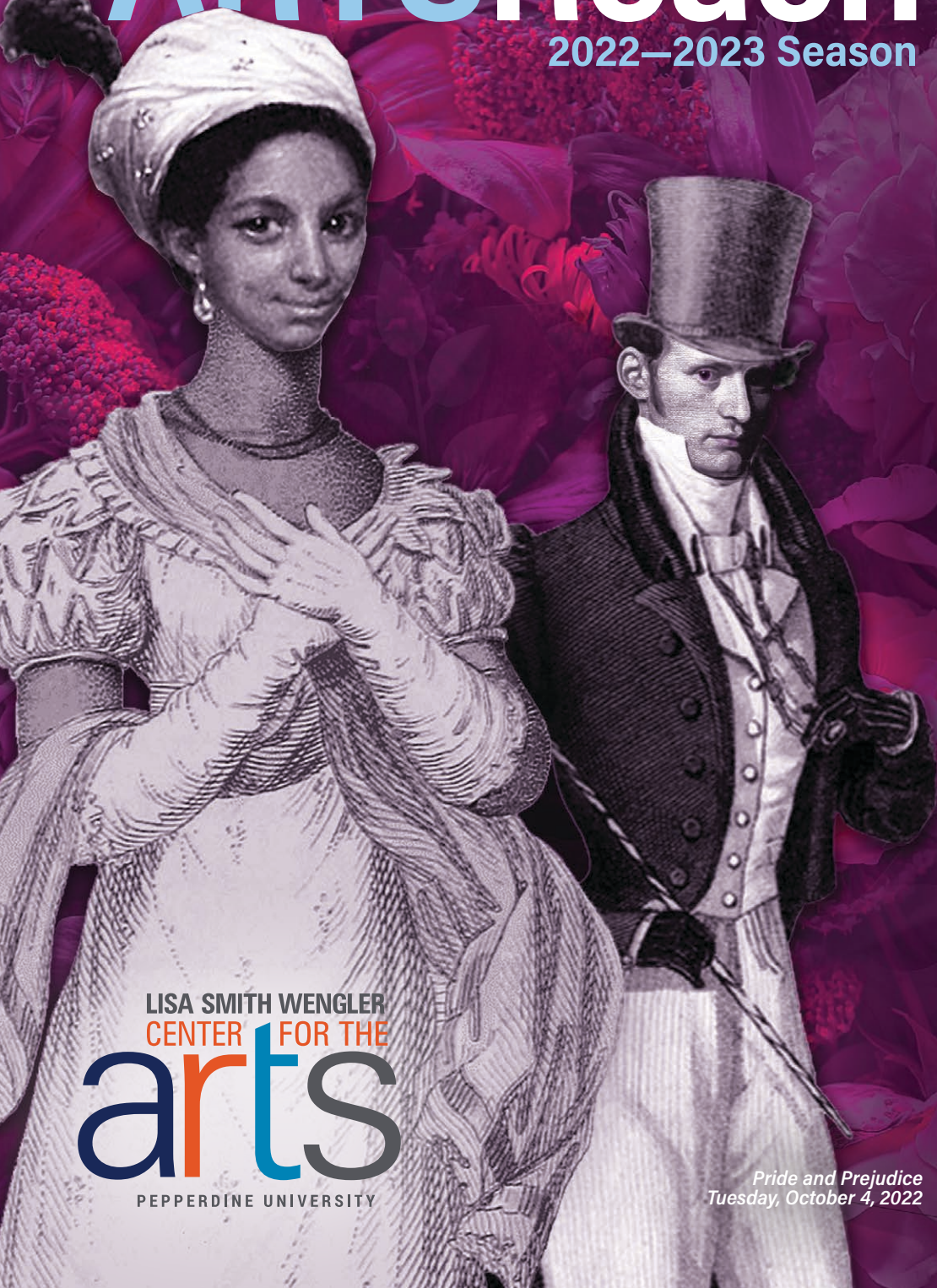


ARTSReach

2022—2023 Season



LISA SMITH WENGLER
CENTER FOR THE

arts

PEPPERDINE UNIVERSITY

Pride and Prejudice
Tuesday, October 4, 2022

ARTSReach

2022—2023 Season

Your class attends these shows for **FREE**.

All performances take place in the intimate 500-seat Smothers Theatre. All performances except for *Pride and Prejudice* last about one hour. Reserve your tickets today!



Aquila Theatre Presents **PRIDE AND PREJUDICE**

Jane Austen's ultimate romantic comedy, *Pride and Prejudice*, has stood the test of time. Filled with unforgettable characters, including Elizabeth Bennet and Mr. Darcy, Austen humorously skewers the hypocrisies and absurdities of the English class system. Aquila Theatre brings her thrilling classic to life through their innovative adaptation, which the *New Yorker* calls "beautifully spoken, dramatically revealing and crystalline in effect." aquilatheatre.com

Please note: the running time for this performance is approximately 2 ½ hours, including an intermission.

Tuesday, October 4, 2022 | 10:30 AM
Grades 9–12



JOY TO THE WORLD: A CHRISTMAS MUSICAL JOURNEY FEATURING DAMIEN SNEED

Celebrate the season with Damien Sneed, the multitalented composer, conductor, musician, and vocalist, in his *Joy to the World: A Christmas Musical Journey*. Sneed will perform on keyboards and vocals with a group of phenomenal singers and musicians as they render Sneed's unique arrangements of familiar Christmas carols, original holiday tunes, classical favorites, folk songs, spirituals, and more.

Monday, December 5, 2022 | 10 AM
Grades 2–5

PILOBOLUS: THE BIG FIVE-OH!

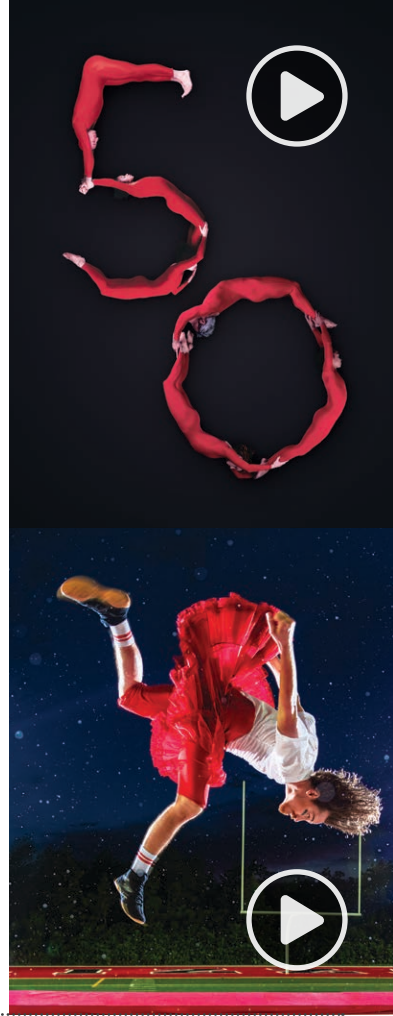
Pilobolus is turning 50! Since the early 1970s, this remarkable company has been wowing audiences with its irresistible mix of wit, vibrant energy, and stunning physical acumen. Now, to celebrate 50 amazing years, the *BIG FIVE-OH!* tour brings audiences a mix of Pilobolus' signature pieces, from vintage classics to their trend-setting innovative work in shadow. pilobolus.org

Wednesday, January 25, 2023 | 11 AM
[Grades 6–8](#)

CIRQUE FLIP FABRIQUE: MUSE

Québec-based Cirque FLIP Fabrique plays with gender roles in the eclectic *Muse*, a refreshing view of contemporary circus. Set to an original score and live vocals, the acrobats' gravity-defying performance combines breathtaking artistry and athleticism to explore the definitions of powerful women, graceful men, and everything in between. flipfabrique.com

Thursday, February 2, 2023 | 10 AM
[Grades 3–6](#)



Pepperdine Student Activities presents DANCE IN FLIGHT

Dance in Flight embodies the diversity and essence of Seaver College and the liberal arts tradition. For 30 years, Dance in Flight has provided a safe environment for emerging student dancers and choreographers to cultivate creativity, physical expression, and teamwork in a professional performing atmosphere. The company members come from a variety of dance backgrounds, interests, and fields of study. United by their passion for the art of movement, they are dedicated to presenting an impressive showcase of student artistry.

Wednesday, February 8, 2023 | 10 AM
[Grades 2–5](#)



TREY MCLAUGHLIN AND THE SOUNDS OF ZAMAR

Trey McLaughlin and the Sounds of Zamar have transcended cultural boundaries and international borders with their fresh adaptations of contemporary gospel, pop, and musical theatre hits. Their soul-stirring arrangements, opulent harmonies, and beautiful blends have garnered them millions of loyal YouTube followers, positioning them to be one of the brightest new groups on the gospel/neo soul scene. treymlaughlin.com

Wednesday, March 8, 2023 | 11:45 AM
[Grades 2-5](#)



FLAMENCO VIVO

One of America's premier flamenco and Spanish dance companies, Flamenco Vivo Carlota Santana has dedicated 40 years of dazzling performances to honoring, invigorating, and expanding the art form. Featuring emerging artists, accomplished choreographers, and dozens of new works, the company uplifts flamenco as a living art form and a vital part of Hispanic heritage. flamenco-vivo.org

Tuesday, March 21, 2023 | 11:45 AM
[Grades 3-6](#)

FREDERICK R. WEISMAN MUSEUM OF ART

MUSEUM TOURS are provided to you at **NO COST** and are available before or after performances at Smothers Theatre, or at specially arranged times. Regular museum hours are 11 AM to 5 PM, Tuesday through Sunday. Please call **310.506.4766** to reserve a tour. Space in the museum is limited.



Left: Lucas Reiner, *Station XI - Crucifixion*, 2010, drypoint, aquatint, spitbite, and etching on paper, from a portfolio of 15 prints. Courtesy of Bridge Projects.
Right: Patty Wickman, *Circumscribe*, 2017–2019, oil on linen. Courtesy of Bridge Projects.

TO BOUGH AND TO BEND

Trees feature prominently in the origin stories of many world religions. Ancient history recounts how their shade and branches have been sites of contemplation, suffering, and renewal. Today, trees still speak: deep root systems form tangled webs of communication, blunt stumps nod to deforestation, and charred limbs attest to fires started by our own hands. First curated by Bridge Projects, a gallery that catalyzes interdisciplinary explorations of contemporary art, spirituality, and religious traditions, *To Bough and To Bend* explores these ecological issues through the work of 30 artists who look to religious and historic art practices to guide us back into fellowship with these old friends and the living world we share.

August 30, 2022—March 26, 2023

Grades K–12

A teacher's guide to the exhibition, with supplemental recommendations by grade level, is available by request. Contact Carson Vandermade at carson.vandermade@pepperdine.edu for more information.

Each year Pepperdine's ARTSReach program, supported by the Center for the Arts Guild, inspires the lives of thousands of schoolchildren from Los Angeles and Ventura Counties. These free arts experiences enrich the lives of children with world-class performances and art museum tours.

The guild supports many programs, but its primary focus is to support ARTSReach. If you would like to become involved in this important program or sponsor a bus, please contact the Lisa Smith Wengler Center for the Arts at **310.506.4594**.

**LEARN MORE
ABOUT THE GUILD**



Apply for tickets to an ARTSReach performance!

- 1. Complete the application below and submit it by mail, or scan the QR code to fill out the online submission form.
- 2. If we are able to accommodate your request, you will be notified by email.
- 3. If we are able to accommodate your request, you will be asked to send a \$1-per-seat deposit.

Seating is limited. Applications are filled on an as-is-available basis and allocated to maintain a balance of local and out-of-area schools, as well as those new to the program. Prior attendance records are also considered. A limited number of bus grants are available to schools showing financial need.

Questions? Call **Carson Vandermade** at 310.506.4766 or email **carson.vandermade@pepperdine.edu**.

Please detach and mail to:

Pepperdine University
Center for the Arts/ARTSReach
24255 Pacific Coast Hwy.
Malibu, CA 90263

ARTSReach REQUEST FORM

School name _____

Field trip contact person _____

Teacher _____ Grade _____

School address _____

City _____ Zip _____

School phone _____ Ext. _____

Phone to reach you on day of show _____

Email _____

Summer email _____

- ☐ I request a **bus grant**.
- ☐ **YES**, please treat our \$1-per-seat deposit as a donation to ARTSReach.
- ☐ **No**, please refund our \$1-per-seat deposit after the performance.

I REQUEST THE FOLLOWING SEATS FOR MY CLASS (limit 200 per performance):

SHOWS	DATES	TIMES	NUMBER OF SEATS	GRADE	RANK IN ORDER OF PREFERENCE
Pride and Prejudice	Tues., Oct 4	10:30 AM			
Joy to the World	Mon., Dec 5	10 AM			
Pilobolus	Wed., Jan 25	11 AM			
Cirque FLIP Fabrique	Thurs., Feb. 2	10 AM			
Dance in Flight	Wed., Feb. 8	10 AM			
Trey McLaughlin and the Sounds of Zamar	Wed., March 8	11:45 AM			
Flamenco Vivo	Tues., March 21	11:45 AM			

TO SUBMIT THE REQUEST FORM ONLINE

please scan the QR code.



TO PLAN YOUR VISIT

please scan the QR code here.

