

PEPPERDINE

PEPPERDINE UNIVERSITY FINE ARTS DIVISION  
MUSIC AND THEATRE PROGRAMS PRESENT  
THE LUCIANA AND DANIEL FORGE FALL MUSICAL  
A MARY PICKFORD-STOTSENBERG PERFORMANCE

# INTO THE WOODS



Music and Lyrics by Stephen Sondheim

Book by James Lapine

Originally Directed on Broadway by James Lapine

Friday, November 11—Saturday, November 12, 2022, 7:30 PM

Sunday, November 13, 2022, 2 PM

Thursday, November 17—Friday, November 18, 2022, 7:30 PM

Saturday, November 19, 2022, 2 PM

Smothers Theatre

PEPPERDINE UNIVERSITY FINE ARTS DIVISION  
MUSIC AND THEATRE PROGRAMS

presents

The Luciana and Daniel Forge Fall Musical

*A Mary Pickford-Stotsenberg Performance*

# INTO THE WOODS

Music and Lyrics by Stephen Sondheim  
Book by James Lapine

Originally Directed on Broadway by James Lapine  
Orchestrations by Jonathan Tunick

Director	<b>Hollace Starr</b>
Vocal Director	<b>Ida Nicolosi</b>
Conductor	<b>Pierre Tang</b>
Choreographer	<b>Kelly Todd</b>
Scenic Designer/Props Designer	<b>Paul Dufresne</b>
Costume Designer	<b>Melanie Watnick</b>
Hair & Wig Designer	<b>Haley Powell</b>
Lighting Designer	<b>Lindsay Alayne Stevens</b>
Sound Designer	<b>Mia Glenn-Schuster</b>
Projection Designer	<b>Nick Santiago</b>

**There will be one 15-minute intermission.**

Original Broadway production by  
Heidi Landesman Rocco Landesman Rick Steiner  
M. Anthony Fisher Frederic H. Mayerson Jujamcyn Theatres  
Originally produced by the Old Globe Theater, San Diego, CA

*Into the Woods* is presented through special arrangement with Musical Theatre International (MTI). All authorized performance materials are also supplied by MTI. [www.mtishows.com](http://www.mtishows.com)

Any video and/or audio recording of this production is strictly prohibited.

Fog and haze are used in this production.

# Musical Numbers

## ACT I

Opening: Into the Woods . . . . .	The Company
Cinderella at the Grave . . . . .	Cinderella, Cinderella's Mother
Hello, Little Girl . . . . .	Wolves, Little Red Ridinghood
I Guess This Is Goodbye . . . . .	Jack
Maybe They're Magic. . . . .	Baker's Wife, Baker
I Know Things Now . . . . .	Little Red Ridinghood
A Very Nice Prince. . . . .	Cinderella, Baker's Wife
First Midnight . . . . .	Baker, Baker's Wife, Mysterious Man, Witch, Steward, Cinderella, Cinderella's Prince, Rapunzel's Prince, Florinda, Lucinda, Stepmother, Jack, Jack's Mother, Little Red Ridinghood, Cinderella's Father, Rapunzel, Granny
Giants in the Sky. . . . .	Jack
Agony . . . . .	Cinderella's Prince, Rapunzel's Prince
A Very Nice Prince (Reprise) . . . . .	Cinderella, Baker's Wife
It Takes Two. . . . .	Baker, Baker's Wife
Second Midnight . . . . .	Witch, Cinderella, Cinderella's Prince, Rapunzel's Prince, Stepmother, Florinda, Lucinda, Granny, Narrator, Baker
Stay With Me . . . . .	Witch, Rapunzel
On The Steps Of The Palace . . . . .	Cinderella
Finale: Ever After . . . . .	The Company

## INTERMISSION

## ACT II

Opening: So Happy . . . . .	The Company
Agony (Reprise) . . . . .	Cinderella's Prince, Rapunzel's Prince
Witch's Lament . . . . .	Witch
Any Moment . . . . .	Cinderella's Prince, Baker's Wife
Moments in the Woods . . . . .	Baker's Wife
Your Fault. . . . .	Jack, Little Red Ridinghood, Baker, Witch, Cinderella
Last Midnight . . . . .	Jack, Witch, Cinderella, Baker, Little Red Ridinghood
No More . . . . .	Baker, Mysterious Man
No One Is Alone. . . . .	Cinderella, Little Red Ridinghood, Baker, Jack
Finale: Into the Woods . . . . .	The Company

# Cast

Witch . . . . .	Madison Sprague
Baker. . . . .	Dawson Foster
Baker's Wife. . . . .	Kayla Bryant
Narrator/Mysterious Man. . . . .	Sam Brock
Cinderella. . . . .	Penny Devlin
Jack . . . . .	Jackson Murrieta
Little Red Ridinghood . . . . .	Hannah Sedlacek
Jack's Mother . . . . .	Brittany Weinstock
Rapunzel . . . . .	Chloe Higgins
Cinderella's Prince . . . . .	Joshua Corey
Wolf/ Rapunzel's Prince. . . . .	Jace Vendelin
Stepmother . . . . .	Holly Jackson
Lucinda. . . . .	Lucy Schene
Florinda . . . . .	Avery Beavers
Cinderella's Mother/Granny/Giant . . . . .	Haily Watson
Cinderella's Father . . . . .	Luke Oldroyd
Steward. . . . .	Cole Wagner
Snow White/ Female Understudy . . . . .	Kaitlyn Diffenderfer
Sleeping Beauty/ Female Understudy. . . . .	Isabelle Titzer
Puppeteer 1 . . . . .	Brykell Killingsworth
Puppeteer 2 . . . . .	Spencer Williams
Male Understudy . . . . .	John Silva

# Orchestra Personnel

**Yoona Lee**  
Flute/Piccolo

**Alexander Hong**  
Trumpet

**Edward Li**  
Cello

**Brett Cochran**  
Clarinet

**Alexander Frederick<sup>s</sup>**  
Percussion

**Jason Press**  
Bass

**Elijah Ettetdgui**  
Bassoon

**Yulbee Shin<sup>P</sup>**  
**Bridget Ayers**  
Violin

**Isaiah Chung**  
Synthesizer

**Chris Wilson**  
**Will Grace<sup>#</sup>**  
Horn

**Sam Sun<sup>P</sup>**  
**Tory Wile**  
Viola

**Grace Lee<sup>s</sup>**  
Piano

*# External musicians*  
*\$ Pepperdine faculty*  
*P Principal*

# Production Staff

Technical Director . . . . .	Rick Aglietti
Assistant Technical Director/Scene Shop Foreman . . . . .	Stewart O'Rourke
Scene / Properties / Puppet Designer . . . . .	Paul J. Dufresne
Stage Manager . . . . .	Harper Tramm
Assistant Stage Managers . . . . .	Ephram Aguirre, Jacqueline Thornell
Assistant Director . . . . .	Coby Rogers
Rehearsal Pianist . . . . .	Grace Lee
Orchestra Manager . . . . .	Yoona Lee
Assistant Lighting Designer . . . . .	Katie Ohrn
Projections Designer . . . . .	Nick Santiago
Assistant Projection Designer . . . . .	Christopher Jerabek
Lead Carpenter . . . . .	Lillith McNutt
Deck Manager . . . . .	Mallory Bedford
Mixer and Associate Sound Designer . . . . .	Stella Engel
Light Board Operator . . . . .	Alex Kolm
Projections Operator . . . . .	Genesis Ochoa
Scenic Charge Artist . . . . .	Marine Walton
Set Crew . . . . .	Quinn Conrad, Dani Beebe, Harrison Benjamin, Reece McDaniel, Ryan Koss, Michaela Addy, Andrew Landaverdes, Lilly Zuccala
Props Crew . . . . .	Hannah Keaton, Luca Nicoletti, Daniel Chen, Li
LX/Project/Sound Load in/out Assistant . . . . .	Patrick Lowness-Santos
Costume Draper . . . . .	Megan Knowles
Assistant Costume Designer/Wardrobe Supervisor . . . . .	Connor McKenzie
Wardrobe/Makeup Crew . . . . .	Jada Henry, Zoe O'Donnell, Joshua Rogers, Joshua Wilson, Holly Fuche, Caroline Speed, Juliet Johnson, Nicole Morris, Annalia Avila
Followspot Operators . . . . .	Isabella Camarena, Zachary Lichaa
Sound Crew . . . . .	Matthew Hamm, Tessa Hemphill, Zoe Prior
Scenic Construction and Installation . . . . .	Michaela Addy, Ephram Aguirre, Analise Avila, Mallory Bedford, Dani Beebe, Avery Beavers, Harrison Benjamin, Sam Brock, Kayla Bryant, Isabella Camarena, Daniel Chen, Quinn Conrad, Hunter Conrad, Julian Coronado, Penny Devlin, Kaitlyn Diffenderfer, Stella Engel, Christine Espinosa, Dawson Foster, Holly Fouche, Hannah Girardy, Josie Gonsalas, Zoe Gordon, Kendall Griffin, Matthew Hamm, Tessa Hemphill, Jada Henry, Chloe Higgins, Hannah Huynh, Holly Jackson, Hannah Keaton, Brykell Killingsworth, Ryan Koss, Andres Landeverde, Jacob Makabi, Cat Masterson, Reece McDaniel, Connor McKenzie, Iris Mercado, Gabrielle Montejo, Nicole Morris, Jackson Murrieta, Luca Nicoletti, Genesis Ochoa, Zoe O'Donnel, Zoë Prior, Alysse Quinn, Fatima Reyes, Skye Robergs, Coby Rogers, Josh Rogers, Lindsay Russell, Lucy Schene, Hannah Sedlacek, John Silva, Maddy Sprague, Nehimiah Sterling, Harper Tramm, Jace Vendelin, Natalia Vivas, Cole Wagner, Joshua Wilson, Felicity Wynn

# Director's Note

Sondheim's songs are rich journeys that never finish in the same place where they started. Much like Shakespeare's soliloquies, they are wonderful examples of wit and wordplay, teeming with rhyme, onomatopoeia, alliteration, and all of the features of poetic language that remind us that the tactile experience of speaking words can be similarly satisfying as biting into a delicious apple or kissing someone we love. Sondheim's genius rests in his lyrics; his words manage to deliver ideas, meaning, and sound combinations that feed the intellect, awaken the heart, and nourish desire. His songs are savory and sultry, they are crisp and clever, and they are just as pure at heart as they are seductive and alluring.

Sondheim stands out from the crowd by writing an American musical that asks the audience to listen deeply. We listen to him not in order to admire him but to recognize the ephemeral nature of truth and beauty all the while delighting in the richness of Sondheim's menu. He possesses a special ability to dramatize the human epiphany by repeating melodies and themes while making only small changes to his lyrics. For example, in this play, Sondheim describes the Witch's reversal by changing a few key words in one of her beautiful, touching refrains. Early in Act II the Witch regrets that, "No matter what you say, children won't listen." But by the end of the play, the Witch changes her lyric slightly, but in a way that indicates a fundamental change of philosophy: "Careful the things you say, children will listen." By exchanging the "don't" for a "will," Sondheim distills one of his major messages: that the choices we make really do impact others. We are not merely individuals pursuing personal wishes. We are members of the human family, indeed actors within a larger ecological system that includes animals, plants, skies, earth, oceans, and the spiritual realm. While a life well lived demands that we go after our individual wants, we must also keep one eye on the larger system, and we must keep our hearts on the people we love. After all, what does it matter if, in getting what we want, we do so at the expense of those around us?

In this regard, *Into the Woods* touches on the most important questions of our day: how do we lead fulfilling lives that will enrich ourselves and others? The Baker's Wife needs Cinderella's golden slipper to complete the potion, reverse the curse, and get her wish, but Cinderella needs to retain her slipper so that she can escape from the prince by midnight. Do we live in a world where only one person can end up with the golden slipper, or, by listening to others, will we chart a new and better path forward that takes everyone into consideration? How do we want to do our lives, alone or in harmony with others?

Speaking of harmony, Sondheim's are complex, I can tell you. It has taken copious time and maximum effort and dedication for the voices in this play to learn to sing together. It has taken listening, practice, hope, determination, trying, failing, and trying again. It has taken going into the woods. And of course, because it wouldn't be in harmony otherwise, it couldn't have been done alone.

—Hollace Starr, Director

# Bios for Director & Designers

---

**Hollace Starr** (Director) is an associate professor of theatre at Pepperdine University, where she teaches, coaches voice and dialects, and directs. Recently, Hollace adapted Shakespeare's *As You Like It* for the zoom stage here at Pepperdine. In 2020, she directed the West Coast Premiere of Mike Bartlett's *Earthquakes In London* at Rogue Machine Theatre, and she wrote and voiced the original prologue for the video version of Pepperdine's COVID-cancelled *The Cherry Orchard*, which was published in the "Emergency" issue of the online theatre journal *Imagined Theatres*. Other directing credits include *Falling*, *Circle Mirror Transformation*, and *Eurydice* at Pepperdine, and *Three Views Of The Same Object* at Rogue Machine Theatre. Hollace has provided voice and dialect coaching for numerous productions including *Joe Egg* (Odyssey), *Miss Lilly Gets Boned* (Rogue Machine), and *Tracers* (USVAA) and many Pepperdine theatre productions, including *Christmas at Pemberley*, *Curtains*, *South Pacific*, *Heritage*, *Medea*, and *The Interference*. Hollace's acting credits include *Yard Sale Signs* and *Milkmilklemonade* at Rogue Machine, *A Chicago Christmas Carol* at Crown City Theatre, *Small Tragedy* at the Odyssey for which Hollace received an Ovation Award nomination, *Vieux Carre* at the Ivy Substation, *Window Of Opportunity* at the Met, and productions at The Fountain Theatre, The Actors' Gang, and more. Hollace performed her one-woman show *My Dad Came Dressed As Marilyn Monroe* at Highways Performance Space and at the Hysteria Festival in Toronto, Canada. She is a founding member of Rogue Machine Theatre Company and on the board of

Trade City Productions, which operates the Popwagon, Los Angeles' very first mobile theatre truck. Hollace received her MFA in acting from UCLA's School of Theatre, Film and Television. She is a lifetime member of the Actors Studio and a designated Linklater Voice teacher.

**Ida Nicolosi** (Vocal Director) is recognized for her command of a great breadth of repertoire that encompasses opera, oratorio, early music, musical theater, and new music. She made her Carnegie Hall debut in 2012 singing the world premiere of James Eakin's *Flowers Over the Graves of War* presented by Distinguished Concerts International New York. Nicolosi has sung with the Spoleto Festival USA, Lincoln Center Festival, Kansas City Puccini Festival, OPERA Iowa, Lyric Opera of Kansas City, The Gotham Chamber Opera, The Des Moines Metro Opera, the Kansas City Civic Opera, the Janiec Opera Center, the Jewell Early Music Festival, and the Simon Carrington Chamber Singers. Ms. Nicolosi lives in Malibu with her husband and two sons and has taught voice and courses in Music Education at Pepperdine University for the past twelve years. She is thrilled to be joining her colleagues this year as a Visiting Assistant Instructor of Voice, where she teaches studio voice, Vocal Literature, and is the vocal director for the fall musical. Ida also taught voice at the Conservatory of Music and Dance at the University of Missouri-Kansas City for five years after pursuing an Artist Diploma in Opera Performance and holds both her Bachelors in Music Education and her Masters in Vocal Performance and Pedagogy from Westminster Choir College in Princeton, New Jersey.

Ida Nicolosi's students have been accepted into graduate programs at such institutions as Indiana University, New England Conservatory, Boston University, Boston Conservatory, Longy School of Music at Bard College, NYU, Manhattan School of Music, Westminster Choir College, Notre Dame, the University of Colorado at Boulder, the University of Illinois, Conservatory of Music at UMKC, the University of North Texas, and Eastern Carolina University. In addition to classical training at the graduate level, Ida Nicolosi's former students are currently pursuing careers in opera, musical theater, country music, and other popular genres.

**Kelly Todd** (Choreographer) is in her ninth year as a professor at Pepperdine. She has directed and/or choreographed many Pepperdine productions including *Mamma Mia!*, *Ragtime* and *Curtains*. She is the 2014 Ovation Award Winner for Best Choreography for her work on *Lysistrata Jones* at the Chance Theater, where she was a resident artist for 15 years. Some of her favorite credits there have been *West Side Story*, for which she received the L.A. Drama Critics Circle 2012 Special Award for Fight Choreography, and both *Triassic Park* (2013) and *Jerry Springer: The Opera* (2011), which won the Ovation Awards for Best Musical in an Intimate Theater and garnered her Ovation Award Nominations for Best Choreography. She was named Southern California's Choreographer of the Year in 2011 and 2012 by Stage Scene L.A. Other credits include *Last Stop on Market Street*, *A Christmas Carol*, *Sweeney Todd*, *Once*, *Light in the Piazza*, *Ivy and Bean*, *The Musical*, *Peter Pan*, and *Seussical* at South Coast Repertory; *The Who's Tommy* at Segerstrom Center for the Arts; and two world premieres, *Keep Movin' On*,

featuring the music of Sam Cooke, and *What's Going On*, featuring the music of Marvin Gaye. Before working professionally in theater, Todd spent close to 20 years as an arts educator. For 17 years, each summer she worked with the Children's Civic Light Opera, ages 6–16, and the Young Adult Civic Light Opera, ages 16–23, choreographing and directing over 20 musicals including *Grease*, *A Chorus Line*, *Annie*, *Chicago*, *Crazy For You*, and *Thoroughly Modern Millie*. She taught high school dance, drama, and math for the Los Angeles Unified School District (LAUSD) for five years at Washington Prep High School in South Central Los Angeles and Venice High School in Venice and has worked for numerous non-profits in Los Angeles and New York City using original musical theater works as a way to build student performance in school and leadership skills for life.

**Dr. Pierre Tang** (Conductor) is Assistant Professor of Music at Pepperdine University, directing the instrumental ensemble program. Tang conducts the Pepperdine orchestra, wind ensemble, musical theatre and opera. Selected presentations of his scholarly research on conducting studies include the Oxford Conducting Institute International Conference and the World Association for Symphonic Bands and Ensembles. Raised in Hong Kong, he is a sought-after guest conductor and clinician for instrumental and vocal ensembles internationally. Tang also teaches conducting workshops and directorship seminars in Hong Kong. In addition, Tang currently serves as the Director of Music at the Pacific Palisades Presbyterian Church. Before his orchestral pursuits, Tang completed master's degrees in both wind conducting and choral music, and specialized in composition and piano



performance at the Chinese University of Hong Kong. Tang's principal teachers include Donald Schleicher, Andrew Megill, Chester Alwes, Linda Moorhouse, Stephen Peterson, Dennis Helmrich and Julie Kuok. He has participated in masterclasses led by Joseph Flummerfelt, H. Robert Reynolds, Jerry Junkin, Larry Rachleff, Osmo Vänskä etc.

As a vocal coach and collaborative keyboardist, Tang has worked with such renowned musicians as Roberto Abbondanza, Alois Gläßner, Jacques Mauger and Eric Aubier etc. Recent performances as keyboardist include St. Michael's Church (Vienna), Lincoln Center (New York), Chicago Symphony Center, and in the Krannert Center as continuo organist for the Illinois Bach Academy.

**Harper Tramm** (Stage Manager) is a senior Theatre Production and Design student with an emphasis in Stage Management, from Keller, TX. Some of her most recent Pepperdine Theatre credits include: *The Winter's Tale* (Stage Manager), *Ugly Lies The Bone* (Stage Manager), *Mamma Mia!* (Wardrobe Head), *We Are Proud to Present* (Asst. Lighting Designer / LBO), *Ragtime* (Assistant Stage Manager), *Men On Boats* (Stage Manager), *Miss Bennet: Christmas at Pemberley* (Crew). Harper is absolutely thrilled to be working with this Cast and Crew, Hollace, Kelly, Professor Nicolsi, Jacqueline, Ephram, and Coby. She would also like to thank her Mom and Dad for always encouraging her to achieve her dreams, and their endless support for her love of the Arts. With special thanks to her thesis advisor, Paul Dufresne, for all of his advice, and support these past few months. She is a member of Pi Beta Phi Chapter, a Theatre Representative, as well as a recipient of the George Pepperdine Achievement

Award, Ubben Endowed Theatre Scholarship, and the Pepperdine Theater Arts Scholarship. And finally, to the graduating class of 2023 always remember; "Someone is on your side, No one is alone." Thank you, and enjoy the show!

**Jacqueline Thornell** (Assistant Stage Manager) is a sophomore Theatre major with an emphasis in Directing and a minor in Hispanic Studies from (most recently) Cheyenne, WY. Her Pepperdine performances include *The Winter's Tale* (Assistant Director), *Some Oral Histories of Ground Zero* (Stage Manager) and *Mamma Mia!* (Set Crew Position). She is a Regent Scholar and a recipient of the Pepperdine Theatre Arts Scholarship. She is a sister of the Gamma Phi Beta Sorority. Thornell is thankful to God for this wonderful opportunity, her mentor Harper Tramm, and her loved ones that supported her both near and far.

**Ephram Aguirre** (Assistant Stage Manager) is a freshman Theatre Arts major with an emphasis in Production and Design, originally from Guadalajara, Jalisco, Mexico, but coming to Pepperdine from Portland, OR. This is his first production here at Pepperdine, but has done work ranging from carpentry to light and scenic design in high school theatre productions. He is glad to have the opportunity to continue theatre in college, and would like to thank the members of the Pepperdine Theatre Department for their friendliness and hopes to soon be not just a new face, but a familiar one to the community.

**Coby Rogers** (Assistant Director) is a senior Directing Major from Lubbock, Texas. His Pepperdine acting credits include *We Are Proud to Present...* (Actor 1/White Man), *The Importance of Being Earnest* (Algernon), *Christmas at Pemberley* (Mr. Bingley), and *Ragtime* (Ensemble). He served as the Assistant Director and Assistant Stage Manager on the theatre department's Zoom production of *Polar Bears*, *Black Boys*, and *Prairie-Fringed Orchids*. He attended the 2022 trip to the Edinburgh Fringe Theatre Festival as the Assistant Director and Company Manager. He was a 2019 Jimmy Awards nominee. Rogers is a Theatre Scholarship recipient, Christian Leadership Award recipient, and minors in creative writing.

**Grace Eunbok Lee** (Accompanist) was born in 1982 in Seoul, South Korea. She began playing the piano when she was five years old. After moving to Los Angeles in 1997, she studied under Hak Soon Swaitkowski. Within three and a half years, Lee earned her bachelor's degree at Mount Saint Mary's University with a full scholarship. She graduated her masters with honors at Musikhochschule Nuernberg, Germany. She was an accompanist for many choirs and performed at Walt Disney Concert Hall and New York Carnegie Hall in addition to many other stages in Los Angeles, Europe, and Asia. She previously taught at Pasadena City College. She occasionally plays for Los Angeles Opera Connects. Lee has been a member of Pepperdine University music faculty since August 2022.

**Paul J. Dufresne** (Scenic Designer/ Props Designer/ Production Manager) is a scene designer for theatre and opera based in Los Angeles. Paul received his MFA in scene design from Boston

University studying under designer James Noone and Director Jim Petosa. Paul has designed both nationally and internationally working with companies such as The English National Opera, The Minnesota Opera, Glimmerglass Opera, The Rubicon Theatre Company, The Road Theater Company, The Gary Marshall Theatre, The Guthrie, Cincinnati Playhouse in the Park, Milwaukee Rep, and LA Opera, among others.

Selected credits include scene designs for *Dolores Claiborne*; *Pelléas et Mélisande*; *Le nozze di Figaro*; *Hydrogen Jukebox*; *Die Zauberflöte* directed by Henry Price; Additional credits include ovation nominated production *Nowhere on the Border* (The Road Theatre 2020); *Rhinoceros*, as well as productions of *Angels in America Pt. 1 & 2*; *These Shining Lives*, *Goodnight Don't Be Afraid* and *Hamlet*; Associate scene design for *Class*; *Scott and Hem* (Gary Marshall Theatre - 2015) *La Rondine*, *Man of la Mancha*, *Ghosts of Versailles*; *The Destiny of Desire* among others; Paul was awarded the USITT young designers' national award for outstanding achievement in scenic design in 2016.

Paul is a member of the full time faculty at Pepperdine University teaching design for theatre and opera.

**Melanie Watnick** (Costume Designer) has been working as a professional costume designer for theatre and dance for over 20 years. In addition to her work at Pepperdine, Watnick has designed and lectured at the University of California Irvine, University of California San Diego, and Hartnell College. Her costume designs for dance have been seen in both national and international tours with companies such as: ABTII, BalletX, Corbin Dance, Company C, Complexions Contemporary Ballet, Kansas City

Ballet, Singapore Dance Theatre, Malashock Dance, Backhausdance, Ballet West, and Norwegian Cruise Line. Her theatre designs have included work with companies such as: Juilliard, Seattle Repertory, San Diego Repertory Theatre, the Barter, Great Lakes Theater Festival, South Coast Repertory Theatre, the Open Fist, Boston Court, the Flea, and Rouge Machine. Watnick received her MFA from University of California San Diego and a BA with distinction in her major from the University of California Santa Barbara.

**Haley Powell** (Hair and Wig Designer/Supervisor) is a Pepperdine Alumna, and has worked on a number of Pepperdine shows including hair, makeup, and costumes for *Curtains*, *Taming of the Shrew*, and *Miss Bennet: Christmas at Pemberley*, Hair and Makeup/Costume Head for *Mamma Mia!*, and Hair and Makeup Designer/Supervisor for *The Importance of Being Earnest*. Powell was thrilled to be able to indulge in the fantastical side of hair and wig design for this production and to continue her creative work with the Pepperdine Theatre Department.

**Mia Glenn-Schuster** (Sound Designer) is a sound designer from San Francisco who loves making magic out of minutia. Mia works both in theatre and in video games with previous credits including *Desert Stories for Lost Girls with Native Voices*, *A Little Night Music* with Theatre Planners, *Rock 'em Sock 'em Robots and Foodimals* for the Amazon Alexa, and *The Sims 4: Cottage Living* for EA. In-between shows, Mia can be found working in the ceramics studio or working in their vegetable garden. Mia's work can be found at [mglennsound.com](http://mglennsound.com).

**Lindsay Alayne Stevens** (Lighting Designer) is a lighting designer for theater, dance, live events, and installations. Recent Credits include: La Jolla Playhouse, Bootless Stageworks, SheNYC Festival, SurfFlight Theatre, Milburn Stone Theater, Eastern University, and terraNOVA Collective. Lindsay graduated with 3 BFAs with High Honors in Writing, Theater, and Photography from Marlboro College in 2017. Recently graduating from the University of California, San Diego where she studied theatrical lighting design. More information can be found at her website: [lastevensdesign.com](http://lastevensdesign.com)

**Nicholas Santiago** (Projection Designer) has worked for numerous universities and theatre companies around Los Angeles including the Pasadena Playhouse (*Ham*), Skylight Theatre (*Forever House*, *Church & State*, *Obama Ology*), Rogue Machine (*A Permanent Image*, *Oppenheimer*, *Honky*), USC (*Trojan Women*, *On the Town*), Theatre Planners (*PEMDAS*, *The Red Dress L.O.V.E.R.*), the Chance Theatre (*Tribes*, *Middletown*, *Big Fish*), The Road Theatre (*Nowhere on the Border*, *A Delicate Ship*), LA LGBT Center (*The Search for Signs of Intelligent Life Revisited*), and the Fountain Theatre (*Arrival & Departure*, *The Cost of Living*). He recently designed Cesar Millan's new one man show *Unleashed* that opened at the David Copperfield Theatre at the MGM in Las Vegas. He has received numerous award nominations including an Ovation nomination and a LA Drama Critic's Circle award for his work on Rogue Machine's *A Permanent image* and an ovation win for his work on The Fountain Theatre's production of *The Cost of Living*.  
[www.nsantiagodesign.com](http://www.nsantiagodesign.com)

**Christopher Jerabek** (Assistant Projection Designer) is a theatrical designer living and working out of Los Angeles. He was blessed to serve as the scenic designer for the world premiere of Davey Anderson's *The Abode* at the Edinburgh Fringe Festival, and worked as the scenic and projections designer for Pepperdine University's 2020 TEDx event. His Los Angeles projection credits include *Beloved* and *The Play You Want* with the Road Theatre Company, *Ayano* and *Remembering the Future* with Theatre Planners, and most recently Deaf West's production of *Oedipus* at the Getty Villa. See more of Christopher's work at [www.jerabekdesign.com](http://www.jerabekdesign.com).

**Stewart O'Rourke** (Assistant technical director /shop foreman) has held this position for the Pepperdine Lisa Smith Wengler Center for the Arts since 2004. Prior to that he was the master carpenter in the scene shop and the Weisman Museum Art Museum preparator since 1991. This production of *Into The Woods* marks Stewart's 164th production he has built at Pepperdine. He was also the co-director of the Edinburgh Theatre program from 2000-2006. Besides building scenery, he is very proud of his past directing accomplishments at the Edinburgh fringe. *The Misanthrope* (2000), *After the Fall* (2002), *The Grapes of Wrath* (2004), *Moby Dick Rehearsed* (2006). He has also served as set designer for the following productions, *We are Proud to Present ...* (2020), *The Yellow Boat* (2016), *Doubt* (2014), *The Inspector Calls* (2010), and *The Laramie Project* (2007). He is also proud to be a Pepperdine theatre dept alumnus and having a post graduate degree in Acting from Mountview Conservatory of the Arts in London, England.

# Acknowledgements

---

Thank you to everyone who was involved in *Into The Woods*!  
We couldn't have gotten this far without you!

Michael Fitzgerald  
Laural Jill  
Maureen Weiss  
Reza Safai  
Starr Safai  
Susannah Safai  
Nadya Starr

# Cast

(in alphabetical order by last name)

---



**Avery Beavers** (Florinda) is a junior music major with an emphasis in vocal performance from Lee's Summit, MO. Her Pepperdine roles include Cherubino Cover in *Le Nozze Di Figaro* and Ensemble in *Mamma Mia!*. Beavers is a music scholarship recipient and a third-year member of Pepperdine's Concert and Chamber Choir. She would like to thank everyone in her life who has gotten her to where she is now.



**Sam Brock** (Narrator/Mysterious Man) is a senior Theatre Arts: Acting emphasis from Longmeadow, Massachusetts. His Pepperdine credits include *The Importance of Being Earnest* (Jack), *Americana: A Murder Ballad* (Knox), *The Winter's Tale* (Camillo), *Mamma Mia!* (Bill), *Gloria* (Lorin), *Ugly Lies the Bone* (Kelvin), *Polar Bears*, *Black Boys*, and *Prairie Fringed Orchids* (Peter), and *The Cherry Orchard* (Stationmaster). Brock also produces music, has done several independent films, is a member of the Pepperdine Improv Troupe, and is a Theatre

Scholarship recipient. This is Brock's final semester at Pepperdine, and he would like to thank all of the faculty and his peers for giving him a family here.



**Kayla Bryant** (Baker's Wife) is a third year theatre arts: acting major with a minor in industrial organizational psychology and is originally from Orange County, California. Her previous credits include *Americana: A Murder Ballad* (Polly Williams), performed in Edinburgh, Scotland's Fringe Festival, as well as *Ground Zero: Some Oral Histories from 9/11* (ensemble), performed at Pepperdine University. Bryant's work has also been featured in The Orange County Register and Project's with Jason youtube cabaret series. She is delighted to be a part of this production, and hopes you enjoy the show! @k.a.y.l.a.bryant



**Joshua Corey** (Cinderella's Prince) is a freshman Vocal Performance major. It is his first show at Pepperdine! He would like to thank all of his loved ones for inspiration and faculty for giving him the privilege to perform. Thank you!



**Penny Devlin** (Cinderella) is a senior theater arts major and a minor in communication studies with an emphasis in musical theatre from San Francisco, CA. Her Pepperdine credits include *Americana: A Murder Ballad* (Frankie) in collaboration with the Edinburgh Fringe Festival, *Mamma Mia!* (Ali, Sophie u/s), *Contempo* and the *Fine Arts Cabaret*. She has also trained with the Beverly Hills Playhouse in Los Angeles and the American Conservatory Theater in San Francisco. She is a Music Scholarship recipient and hopes you enjoy the show! @penelopevlin



**Kaitlyn Diffenderfer** (Snow White/ Female Understudy) is a first-year musical theatre major and is thrilled to be in her first production at Pepperdine University. She has appeared in many school and community productions such as *Les Miserables* (Cosette), *Beauty and the Beast* (Belle), *Oklahoma!* (Laurey), *Shrek the Musical* (Gingy), *The Little Mermaid* (Ariel), and many more! Kaitlyn is also a member of Pepperdine University's concert choir. She would like to thank the

wonderful creative team, crew, and cast of *Into the Woods* for such an amazing opportunity.



**Dawson Foster** (Baker) is a senior Theatre Arts major with an emphasis in Musical Theatre from Arlington, TX. He was most recently seen as Lady Bracknell in this fall's production of *The Importance of Being Earnest*. His other Pepperdine credits include *Mamma Mia!* (Harry), *As You Like It* (Duke Frederick), *The Cherry Orchard* (Yasha), & *The Little Prince* (Little Prince). Foster has also participated in the musical theatre revue *Contempo*, and the *Fine Arts Cabaret*. He is a Pickford-Stotsenberg Endowed Theatre Scholarship recipient, and a former member of the Pepperdine Ambassadors Council. A special thanks to his mom & dad for always pushing him to be the best he can be.



**Chloe Higgins** (Rapunzel) is a junior Psychology and Acting major from Camas, Washington, and she is so grateful to be a part of this year's production! Her last role at Pepperdine was as Phoebe in the zoom rendition of

Shakespeare's *As You Like It*. She'd like to thank her wonderfully supportive mother, father, sister, and boyfriend for their love and support.



**Holly Jackson** (Stepmother) is a junior Theatre/Screen Arts Major with a Film Studies Minor. She is super excited to be telling the story of *Into The Woods*! She is from Lenexa, KS. Jackson's first production was Pepperdine Theatre's *Freshman Showcase*, where she performed a monologue from Henrik Ibsen's *A Doll's House*. Shortly after, she was involved in the school's play, *Ugly Lies The Bone*, where she got to perform in her first online play production! Her most recent project with Pepperdine Theatre was the musical *Mamma Mia!*, where she played Tanya. Outside of Pepperdine Theatre, Jackson also enjoys working for the Pepperdine Center for the Arts where she edits some of the season trailers and sneak peaks for shows to come. She loves bringing happiness and joy to her peers, and can't wait to see what she does next! She hopes you enjoy the show—take away the love that it gives and pass it on to one another!



**Brykell Killingsworth** (Puppeteer 1) is a senior Theatre/acting Major from Trinidad, Texas. His Pepperdine acting credits include *We Are Proud to Present...* (Actor 2/Black Man), *The Cherry Orchard* (Firs), *As You Like It* (William, Adam), and *Ragtime* (Ensemble) as well as some student films. Brykell also participated in the Pepperdine Edinburgh program where they competed in the 2022 Fringe Festival. He's an alum of the Pepperdine Improv Troupe as well as a Theatre Scholarship recipient.



**Jackson Murrieta** (Jack) is a junior theater arts major with an emphasis in musical theater and a minor in marketing from Albuquerque, New Mexico. Murrieta's previous Pepperdine credits include *Mamma Mia!* (Pepper), *Contempo* (Jackson Murrieta), and *First Year Showcase* (Jackson Murrieta). Murrieta is a Pepperdine Theatre Arts Scholarship recipient and a member of the Pepperdine Concert Choir. He would like to thank his friends and family for supporting him and he hopes you enjoy the show! @jacksonmurrieta



**Luke Oldroyd** (Cinderella's Father) is a senior voice major from Kansas City, MO. His Pepperdine credits include *Le Nozze di Figaro* (Figaro), *Mamma Mia!* (Father Alexandrios), *Gianni Schicchi* (Betto), *Dido and Aeneas* (Ensemble), and *Ragtime* (Conklin). Oldroyd is an alumnus of the 2022 Young Artist Vocal Academy at the Houston Grand Opera. He won first prize in the 2021 Cal-West NATS Competition and the 2022 Los Angeles NATS Competition for classical voice. He recently performed scenes from *Susannah* (Blitch), *Così fan tutte* (Don Alfonso), and *Fidelio* (Rocco) during the Pepperdine summer music program in Heidelberg, Germany. Oldroyd is a Music and Regents' Scholarship recipient.



**Lucy Schene** (Lucinda) is honored to be a part of her first production at Pepperdine! Some of her favorite performances include *Mary Poppins-The Munny* (Teen Ensemble), *Camelot-The Munny* (Vocalist), *Chicago-Kirkwood High School* (Velma Kelly), and *The Secret Garden- Missouri Baptist University* (Mary Lennox). Lucy

would like to thank the cast, crew, and production team of *Into The Woods*, as well as her vocal teacher, Ida Nicolosi. Lucy would also like to thank her wonderful family for always supporting her.



**Hannah Sedlacek** (Little Red Ridinghood) is a junior musical theatre major with a minor in marketing from Austin, Texas. Her Pepperdine credits include *Mamma Mia!* (Sophie), *The Winter's Tale* (Autolycus), *My Name is Asher Lev* (The Women), and *Contempo*. This past summer, Hannah made her film debut in Summer Stock Austin's *How To Musical Theatre* (Dancing Ensemble) and worked as an arts administration intern for Impact Arts Inc.. She would like to thank her friends and family for their unconditional love and support.



**John Silva** (Male Understudy) is a sophomore Music major with an emphasis in Voice from Pearland, Texas. His Pepperdine credits include *Mama Mia!* (ensemble) and *Le Nozze di Figaro* (Don Basilio). John is a part of Pepperdine's chamber choir, and he is a Music Scholarship recipient.





**Madison Miyuki Sprague** (Witch) is a senior theatre arts major with an emphasis in musical theatre from Reston, VA. Her Pepperdine credits include *Mamma Mia!* (Donna Sheridan), *Winter's Tale* (Ensemble, Autolycus U/S), *Contempo*, *Le Nozze di Figaro* (Chorus), *The Little Prince* (Aviator), *Cendrillon* (Narrator), the *Fine Arts Cabaret*, and *Men on Boats* (Bradley). Sprague placed first in her category in the 2022 NATS Cal-Western Regional Auditions for Musical Theatre. Sprague is a Mary Pickford Theatre Scholarship recipient, a Pepperdine Music Scholarship recipient, a fourth-year member of the Pepperdine Concert Choir, and a member of the Jazz Ensemble. She would like to thank her family, friends, and teachers for all their support and love over the years, and hopes you enjoy your journey into the woods! @madisonmiyuki



**Isabelle Titzer** (Sleeping Beauty/ Female u/s) is a freshman theatre and screen arts major with an emphasis in acting and music minor from Lancaster, Pennsylvania. *Into the Woods* is her first Pepperdine show, and she is

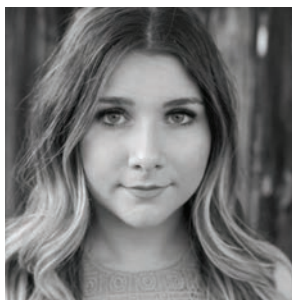
incredibly grateful and excited for this opportunity! Past credits of hers include *Legally Blonde* (Brooke Wyndham), *Joseph and the Amazing Technicolor Dreamcoat* (Narrator), and *Big Fish* (Alabama Lamb), and she has studied with Servant Stage Company. Titzer is a Pepperdine Music Scholarship recipient, a member of the Pepperdine Concert Choir, and a member of the Pepperdine Improv Troupe.



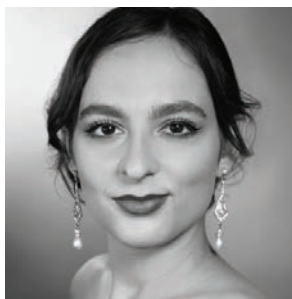
**Jace Vendelin** (Wolf/Rapunzel's Prince) is a sophomore at Pepperdine studying music with an applied vocal emphasis. Jace is from Kansas City, MO. Jace would like to thank everyone who's supported him on his path, and also thank those either involved with or watching the show for making this beautiful magic happen.



**Cole Wagner** (Steward) is a junior Theatre Arts major with a directing emphasis from Portland, Oregon. Cole's Pepperdine credits include *Some Oral Histories of Ground Zero*, *The Winter's Tale*, *Americana: A Murder Ballad*, and *The Importance of Being Earnest*. He is a recipient of the Pepperdine Theatre Arts Scholarship and Vice President of the Pepperdine Improv Troupe.



**Haily Watson** (Cinderella's Mother/Granny/Giant) is a senior Liberal Arts major studying classical voice at Pepperdine University. She has been a part of the music community since 2017, being in multiple productions throughout the years. She was an ensemble member for *Pirates of Penzance* (2018) and *Ragtime* (2019), and also was cast in leading roles, such as The Sorceress in *Dido and Aeneas* (2020), Madame de la Haltiere in *Cendrillon* (2021), and Buttercup in *H.M.S. Pinafore* (2023). She has also been in other beloved musical groups here at university, such as *Contempo* (2018-2020), and the Pepperdine Chamber Choir (2018-2023), where she has taken part as both an ensemble member and a featured soloist.



**Brittany Rose Weinstock** (Jack's Mother) is a senior Vocal Performance major with minors in Marketing and Music Composition from Newport Beach, CA. Her Pepperdine credits include *Le Nozze di Figaro* (Countess

Almaviva), *Cendrillon* (Spirit, Noémie Cover), *Dido and Aeneas* (Chorus, Spirit, Second Witch Cover), and *Ragtime* (Immigrant Ensemble). Weinstock participated in Pepperdine's Heidelberg Music Program, performing scenes from *Susannah* (Susannah), *L'elisir d'amore* (Adina), and *Létoile* (Laoula). She placed first in her category in the 2021 NATS-LA Competition and second in her category in the 2022 NATS Cal-Western Regional Auditions. Weinstock is a fourth-year member of Chamber Choir, Concert Choir, and the Pickford New Music Ensemble. She is a member of Pi Kappa Lambda Music Honors Society and is a Music Scholarship recipient.



**Spencer Williams** (Puppeteer 2) is a sophomore theatre arts major with an emphasis in Musical Theatre from Los Angeles, California. He is a part of the Pepperdine University Concert & Chamber Choirs. His Pepperdine credits include *Mamma Mia!* as Sky and *Americana: A Murder Ballad* (Lee) in collaboration with the Edinburgh Festival Fringe. He is a Theatre Scholarship recipient as well as Music Scholarship recipient.  
Instagram: @sospencerwilliams

# PEPPERDINE FINE ARTS DIVISION

## UPCOMING THEATRE PRODUCTIONS

### *DEAD MAN'S CELL PHONE*

by Sarah Ruhl

Nic Few, Director

An incessantly ringing cell phone in a quiet café. A stranger at the next table who has had enough. And a dead man. So begins *Dead Man's Cell Phone*, a wildly imaginative comedy by MacArthur fellow Sarah Ruhl.

When Jean finally picks up the dead man's phone, her days become intertwined with his past and the life that goes on without him. As an employee at the Holocaust museum, Jean is well acquainted with the idea of morality and redemption—but the dead man's funeral forces her to confront her long-standing assumptions.

With twists and turns and a bit of whimsy, this off-the-wall play explores our need to connect in a technologically obsessed world.

This production contains profanity.

**Tuesday, January 24–Friday, January 27, 2023, 7:30 PM**

**Saturday, January 28, 2023, 2 PM and 7:30 PM**

\$15 • \$12 faculty and staff • \$10 Pepperdine students

Lindhurst Theatre

*No late seating allowed. Join a talk back with the actors and director after the Wednesday, January 25 performance.*

### **AMERICANA: A MURDER BALLAD**

By Morna Young

Cathy Thomas-Grant, Director

A nation's youth are trapped in a murder ballad they cannot escape. A gunman lurks on every corner. He's behind you. He's beside you. He's inside your mind. This is freedom. This is a war zone. This is Americana. But how do we break the ballad? Fresh from the Edinburgh Festival Fringe of 2022, winners of multiple Fringe First awards Pepperdine Scotland makes new music from old songs in this perpetual story of fear. While neither prop guns nor the sound of guns is used in this play, this is a story about gun violence in schools. This play also contains profanity. Recommended for ages 16+.

**Wednesday, April 5, 2023–Friday, April 7, 2023, 7:30 PM**

**Saturday, April 8, 2023, 2 PM**

\$15 • \$12 for Pepperdine faculty and staff • \$10 Pepperdine students

Smother's Theatre

# PEPPERDINE FINE ARTS DIVISION UPCOMING MUSIC PERFORMANCES

## PEPPERDINE CHOIR AND ORCHESTRA CHRISTMAS CONCERT

*Limited tickets available*

Ryan Board and Long-Tao Tang, Directors

**Thursday, December 1, 2022, 7:30 PM**

Smothers Theatre

## PARKENING MASTER CLASS

Christopher Parkening, Director

**Saturday, February 18, 2023, 2 PM**

Raitt Recital Hall

## PEPPERDINE WIND ENSEMBLE

Long-Tao Tang, Director

**Wednesday, March 15, 2023, 7:30 PM**

Smothers Theatre

## PICKFORD ENSEMBLE

N. Lincoln Hanks, Director

**Tuesday, April 11, 2023, 7:30 PM**

Lindhurst Theatre

## PEPPERDINE ORCHESTRA MASTERWORKS CONCERT

Long-Tao Tang, Director

**Thursday, April 13, 2023, 7:30 PM**

Smothers Theatre

## PEPPERDINE CHOIR MASTERWORKS CONCERT

Ryan Board, Director

**Sunday, April 16, 2023, 7 PM**

Smothers Theatre

Call the Lisa Smith Wengler Center for the Arts at **310.506.4522**  
or visit [arts.pepperdine.edu](https://arts.pepperdine.edu) for more information.

# HOLIDAY BOUTIQUE AND LUNCHEON PRESENTED BY THE CENTER FOR THE ARTS

Tuesday, November 29, 2022 • 10AM  
Sherwood Country Club

The Lisa Smith Wengler Center for the Arts at Pepperdine University presents an innovative, unique, entertaining, and diverse program of exceptional performances and museum exhibitions. Through your support of the Center for the Arts Guild, you help provide the resources necessary to meet our mission of artistic excellence.

Please join us for the 2022 Center for the Arts Guild Holiday Boutique and Luncheon as we come together to celebrate the holiday season and the transformative impact of the arts in our lives. All proceeds benefit Pepperdine's ARTSReach Program, which provides free performances and museum tours for thousands of schoolchildren from throughout Los Angeles and Ventura Counties.



# STAY CONNECTED

---

Read the 2022–2023  
season brochure.



Sign up for the  
CFA email list.



For more information, call the Center for the Arts Box Office  
at 310.506.4522, or visit: [arts.pepperdine.edu](http://arts.pepperdine.edu).

## PEPPERDINE

24255 Pacific Coast Hwy, Malibu, California 90263  
310.506.4000 • [www.pepperdine.edu](http://www.pepperdine.edu)

---

@pepperdinetheatre



@pepperdinecfa



Listen to an interview with  
*Into The Woods* director Hollace Starr  
on the **Centered on the Arts Podcast**



## WE GRATEFULLY ACKNOWLEDGE OUR ANNUAL DONORS

### DISTINGUISHED BENEFACTORS

Howard and Roberta Ahmanson  
Kenny G. Endowed Scholarship  
(Kenneth B. Gorelick)  
David Ferguson  
Luciana and Daniel Forge\*  
David Huenergardt\*  
The Jonathan Club  
Judy Jenkins  
Allan Kwong Family  
Annette Oltmans and J.O. Oltmans II  
Mary Pickford Foundation  
Pickford-Stotsenberg Endowment  
Chloe H. Ross  
Flora L. Thornton\*  
Laurie and Jeff Ubben

### CENTER FOR THE ARTS CHANCELLOR'S CIRCLE

#### Performance Sponsors

The Office of the Chancellor of  
Pepperdine University  
Anne Marie and Mitch Bredefeld  
Melanie and Richard Flamminio  
David Huenergardt\*  
Billie Milam Weisman  
Lisa Smith Wengler

#### Supporting Sponsors

Debby and Andy Benton  
Crest Associates  
Lisa Freer  
Mary and Tom Hawkins  
Alison and Dan Hodgkiss  
Kathleen and Greg Outcalt  
Ellen and Doug Weitman  
Gail and Jim Wilburn

#### Contributing Sponsors

The Anza Hotel  
Shelley and Rick Bayer  
\*G. Beverly Bergmann  
Hannah and Tom Boundy  
Marguerite Brown  
Kathy and Lou Colombano  
Mark DiPaola  
Sara and Sam Jackson  
Marnie and Tom Mitze  
Diane Reilly  
Barbara Vallone

### FRIENDS OF THE THEATRE MEMBERS

#### Platinum Theatre Members

Kala and John Grogg  
Susan and Martin Sedlacek  
Jan and Tim Willis

#### Gold Theatre Members

Connie and Tim Horton  
Mary Ellen and Marshall Waller  
Jerry Warkans

#### Sterling Theatre Members

Lynn Dralle  
Ken Kofman  
Constance Slade

#### Silver Theatre Members

Rosemarie and Gerhard Ihde

### FRIENDS OF MUSIC MEMBERS

#### Friends of Music Gold Members

Judith Jenkins

#### Friends of Music Members

Barbara and Douglas Kindred  
Dr. Louise Lofquist and Mr. Grant Specht  
Jean and Kenneth Watson

#### Gold Music Patron

Paula Wainwright and George Birt

#### Silver Music Patron

Dr. Kindy and Ty DeLong

#### Music Patron

Bruce Grimes  
Annette and Robert Henry  
Andrea and Mark Melcher  
Ming Wa and Qing Yun Li

*\*in memoriam*

---

*Donor listings as of 10/1/2022. See the back cover of this program for our membership programs and how to get involved.*

# Luciana and Daniel Forge

Luciana and Daniel Forge were the founding owners of the world-famous Beau Rivage restaurant, a fixture of the Malibu landscape whose Mediterranean-style ambiance and cuisine delighted the seaside community for more than three decades. Raised in Paris, Daniel emigrated from France in 1952 to Los Angeles, where he spent several years working for the Beverly Hills Hotel and Perino's, the famed eatery from Hollywood's Golden Age.

Daniel met Luciana, an Italian native from Rome and renowned coloratura soprano vocalist in 1956, and the two were married in 1958. Lifelong business owners and entrepreneurs, in 1962 the couple opened L'Auberge, one of Hollywood's first classic French restaurants, which they owned for nearly two decades before building Beau Rivage in 1982. Luciana and Daniel attended and supported student productions for more than 25 years. They were proud to endow the fall musical and theatre scholarships for the Fine Arts Division.

---

## Friends of the Theatre

The Friends of the Theatre supports theatre students by hosting master classes, providing potluck lunches during production weeks, financially supporting Pepperdine's participation in the Edinburgh Festival Fringe, and more. For additional information on the Friends of the Theatre and to learn more about how to get involved, contact the Lisa Smith Wengler Center for the Arts at 310.506.4594.

The Mary Pickford Foundation and the late Dorothy and Edward Stotsenberg of Malibu have provided generous support to student scholarships for Pepperdine University fine arts majors.

A gift to Seaver College's Fine Arts Division helps to enhance the arts and advance excellence in teaching. If you have an interest in supporting the fine arts at Pepperdine, please contact Rachel Guettler, Director of Development, at (310) 506-6514 or email [rachel.guettler@pepperdine.edu](mailto:rachel.guettler@pepperdine.edu).

**Learn more about  
Friends of the Theatre.**

