

PEPPERDINE

FINE ARTS DIVISION THEATRE DEPARTMENT PRESENTS
A MARY PICKFORD-STOTSENBERG PERFORMANCE

UGLY LIES THE BONE

BY LINDSEY FERRENTINO
DIRECTED BY CATHY THOMAS-GRANT



DIGITAL PERFORMANCE

THURSDAY, MAY 6, 2021 • 7:30 PM PDT

FRIDAY, MAY 7, 2021 • 7:30 PM PDT

SATURDAY, MAY 8, 2021 • 2 PM PDT

PEPPERDINE UNIVERSITY FINE ARTS DIVISION

presents

A Mary Pickford-Stotsenberg Performance

UGLY LIES THE BONE

Thursday, May 6, 2021–Friday, May 7, 2021 • 7:30 PM PDT
Saturday, May 8, 2021 • 2 PM PDT

by LINDSEY FERRENTINO

Director	Cathy Thomas-Grant
Assistant Director	Michael Thomas-Visgar
Scenic/Co-Projection Designer	Christopher Jerabek*
Costume/Hair & Make-Up Designer	Melanie Watnick
Sound Designer	Jeff Gardner
Projection Designer	Nick Santiago
Voice and Movement	Hollace Starr

Ugly Lies the Bone is presented by arrangement with
Concord Theatricals on behalf of Samuel French, Inc.
www.concordtheatricals.com

This production runs 1 hour and 35 minutes without intermission.

**There will be a virtual talkback with the cast and creative team
immediately after the Saturday, May 8 performance.**

**A separate viewing link for the talkback will be sent
to registrants for all performances.**

This production uses gunfire sound effects.

* in partial fulfillment of the BA in Theatre Arts with an Emphasis in Production/Design

Ugly Lies the Bone was developed during a residency at the Eugene O'Neil Theatre Center's National Playwrights Conference in 2014.

Preston Whiteway – Executive Director

Wendy C. Goldberg – Artistic Director

Woodward/Newman Award Winner

Developed and Produced by the Bloomington Playwrights Project

Chad Rabinovitz – Producing Artistic Director

This play received a developmental workshop by the Theatre Program of Fordham University in October 2014.

World Premiere Produced in New York City by Roundabout Theatre Company as part of Roundabout Underground at the Harold and Miriam Steinberg Center for Theatre on October 13, 2015.

Todd Haines – Artistic Director

Harold Wolpert – Managing Director

Julia C. Levy – Executive Director

Sydney Beers – General Manager

ROUNDABOUT THEATRE COMPANY

Todd Haines – Artistic Director

An award-winning, not-for-profit company founded in 1965, Roundabout has been recognized for its varied work on five stages on and off Broadway, reaching more than 700,000 theatergoers and 18,000 students each year. Roundabout fulfills its mission each season through the production of classic plays and musicals; development and production of new works by established and emerging writers; educational initiatives that enrich the lives of children and adults; and a subscription model and audience outreach programs that cultivate and engage all audiences. Roundabout Underground, the company's program for early-career playwrights, was launched in 2007. *Ugly Lies the Bone* marks the tenth play in the Roundabout Underground program and is Lindsey Ferrentino's first play with Roundabout.

More information on Roundabout's mission, history, and programs can be found at roundabouttheatre.org.

Setting:
Titusville, Florida
the heart of Florida's space coast

Time:
July 2011
the end of NASA's shuttle program
the end of an era

CAST

Jess. Marcela Ferrarone
Voice/Mom Holly Jackson
Kacie Skylar Brown
Kelvin Sam Brock
Stevie. Matthew Dylan

PRODUCTION STAFF

Production Manager Yelena Babinskaya
Technical Director Rick Aglietti
Stage Manager. Harper Tramm
Assistant Stage Manager Connor McKenzie
Props Master Stella Engel
Sound Board Operator Maya Ordonez
Draper Megan Knowles
Assistant Costume Designer. Ellora Venkat
Lighting Consultant Sean Allinson
Makeup Crew Head Sophia Gibbons
Virtual Reality Specialist Anna Speath
Virtual Reality Specialist Assistant. Kody Fields
Cover/Poster Design Marcela Ferrarone

“What is pain?...

Living here, right now, while remembering all you once were,
all you were capable of.

To get rid of pain, *we let go*.

And when we do that...

We see the world not for what it *was*.

But for what it *is*.

—Lindsay Ferrentino, *Ugly Lies The Bone*

DIRECTOR'S NOTE

This is a beautiful play about the struggle to stay resilient while pushing against physical and emotional pain, something so many of us can relate to having experienced the effects of this pandemic on our lives. Things will never be as they once were, but with the support of family and loved ones we are closer than ever to pulling through. It is through this love for each other that we will recover. The courage of the characters in this story is inspiring.

I am so grateful to the dedicated theatre makers who have made this digital performance possible.

To my cast for their endless patience in helping me to let go
of how things used to be,

I thank you.

To their families who out of love and support have given up basement rooms,
dining rooms and extra bedrooms as rehearsal and performance spaces,

I thank you.

To my brilliant designers who had the vision to embrace the way things are,

I thank you.

To my stage management team for meeting challenges head on
at a moment's notice,

I thank you.

To Yelena for her living example of what resilience really is,

I thank you.

To my son and assistant director, Michael, for teaching me to let go,

I thank you.

—Cathy Thomas-Grant, Director

CAST

(in alphabetical order)



Sam Brock (Kelvin) is a sophomore theater arts major with an emphasis in acting from Longmeadow, MA. His other Pepperdine University credits include *Polar Bears*, *Black Boys*, and *Prairie Fringed Orchids* (Peter) and *The Cherry Orchard* (Stationmaster). Brock has been involved with many short films and newly-released music this year as well. Brock is very grateful to have been able to work with such a talented team, and to grow as an artist during this process. He hopes you enjoy the show.



Skylar Brown (Kacie) is a sophomore majoring in theatre and screen arts with an emphasis in acting from Scottsdale, AZ . This is her first live performance with Pepperdine University. Brown has been involved with theatre her whole life and continues to develop her craft even through quarantine. She has enjoyed the opportunity to work on this powerful piece with the amazing people in the cast and crew. She wishes to thank all of her family and friends who have supported her along this journey.



Matthew Dylan (Stevie) is a first year theatre and screen arts major with an emphasis in acting from Malakoff, TX. This is Dylan's first main stage production. He is also a founding member of Big Love Productions and this summer they will be producing their first feature film. Dylan is a recipient of the Pepperdine Theatre Arts Scholarship. Dylan would like to thank God for creating every opportunity and say, "Big love" to his family and friends who love and support him.



Marcela Ferrarone (Jess) is a senior theatre and media production major with an emphasis in acting and a minor in multimedia design from Barrington, IL. Her Pepperdine theatre credits include *Miss Bennet: Christmas at Pemberley* (Lydia Wickham), *Ragtime* (Assistant Stage Manager), *The Taming of the Shrew* (Curtis), *The Abode* (Ensemble, Troll Hunter), and *Big Fish* (Josephine Bloom). She is currently interning at the Foundation for New American Musicals, and she recently participated in this year's *Contempo* showcase. Ferrarone is a Theatre Scholarship recipient.



Holly Jackson (Voice/Mom) is a first year student from Lenexa, KS. She is so happy to be calling Pepperdine University her home! Jackson's first production was Pepperdine Theatre's *Freshman Showcase*, where she performed a monologue from Henrik Ibsen's *A Doll's House*. *Ugly Lies the Bone* is her second production, and she can't wait for the many projects to come. Outside of Pepperdine Theatre, Jackson also serves as Pepperdine Choral Department's Video Production Producer, where she gets to help the Choral Department in putting together their choir concerts for the community to enjoy. She loves bringing happiness and joy to her peers and can't wait to see what she does next! She hopes you enjoy the show, take away the love that it gives and pass it on to one another!

ARTISTIC STAFF

(in alphabetical order)

Sean Allinson (Lighting Consultant) is a junior double major in political science and theatre production/design with an emphasis in lighting and sound from La Mirada, CA. He previously worked as the Stream Assistant for Pepperdine Theatre's Fall production of *Polar Bears*, *Black Boys and Prairie Fringed Orchids*, and was Stage Manager for the 2021 Spring production of *As You Like It*. Allinson is a recipient of the Ubben Endowed Theatre Scholarship as well as the Pepperdine Theatre Arts Scholarship.

Yelena Babinskaya (Production Manager) is a member of the production design faculty at Pepperdine. She works all over L.A. and the country as a lighting, scenic, and costume designer. She holds an MFA from UCLA and a BA from UNC. Babinskaya is a member of United States Institute for Theatre Technology (USITT). She is very excited to be part of this adventure.

Stella Engel (Props Master) is a first year production design major from Searcy, AR. Engel's previous Pepperdine credits include Assistant Stage Manager for the Fine Arts *First Year Showcase* and the *Fine Arts Cabaret*, as well as the Sound Board Operator for *Polar Bears*, *Black Boys and Prairie Fringed Orchids*. Engel is a recipient of the Pepperdine Theater Arts Scholarship.

Jeff Gardner (Sound Designer) is an award-winning sound designer, foley artist and actor. He has designed and performed throughout the country, including the Geffen Playhouse, the Kirk Douglas Theatre, the Wallis Annenberg Center, A Noise Within, Antaeus Theatre Company, Boston Court Pasadena, Circle X Theatre, Echo Theater, the Shakespeare Theatre (DC), Arena Stage, the Kennedy Center, Williamstown Theatre Festival, and the Edinburgh Festival Fringe in Scotland. Gardner can be seen at L.A. Theatre Works where he regularly performs live sound effects and is the resident sound designer for the Westridge School in Pasadena. You can view more of his work at jeffthomasgardner.net.

Christopher Jerabek (Scenic/Co-Projection Designer) is a senior theatre major, emphasizing in production/design and directing, with a minor in studio art from Lubbock, TX. His scenic designs have been seen on Pepperdine stages in *Rhinoceros*, *Call Center*, and *Stay, Because...* Jerabek also served as the Scenic Designer, Props Master, and Assistant Director for *The Abode* at its Edinburgh Festival Fringe world premiere. He was recently the Scenic and Projections Designer for the 2020 Pepperdine University TEDx event, as well as the Projection Designer for Pepperdine's production of *As You Like It*. Jerabek is a Regents' Scholar, and is a recipient of the Pickford-Stotsenberg Endowment, courtesy of the Theatre Department.

Nick Santiago (Projection Designer) has worked for numerous universities and theatre companies around Los Angeles, including the Pasadena Playhouse (*Ham*), Skylight Theatre (*Forever House*, *Church & State*, *Obama Ology*), Rogue Machine (*A Permanent Image*, *Oppenheimer*, *Honky*), USC (*Trojan Women*, *On the Town*), Theatre Planners (*PEMDAS*, *The Red Dress L.O.V.E.R.*), the Chance Theatre (*Tribes*, *Middletown*, *Big Fish*), The Road Theatre (*Nowhere on the Border*, *A Delicate Ship*), L.A. LGBT Center (*The Search for Signs of Intelligent Life Revisited*), and the Fountain Theatre (*Arrival & Departure*, *The Cost of Living*). He recently designed Cesar Millan's new one-man show *Unleashed* that opened at the David Copperfield Theatre at the MGM in Las Vegas. Santiago has received numerous award nominations including an Ovation nomination and an L.A. Drama Critics Circle award for his work on Rogue Machine's *A Permanent Image* and an ovation win for his work on The Fountain Theatre's production of *The Cost of Living*. You can view more of his work at nsantiagodesign.com.

Hollace Starr (Voice and Movement) is an associate professor of theatre at Pepperdine University, where she teaches, coaches voice and dialects, and directs. Recently, Starr adapted Shakespeare's *As You Like It* for the Zoom stage here at Pepperdine. Last year, she directed the West Coast Premiere of Mike Bartlett's *Earthquakes in London* at Rogue Machine Theatre, and she wrote and voiced the original prologue for the video version of Pepperdine's COVID-cancelled *The Cherry Orchard*, which was published in the "Emergency" issue of the online theatre journal *Imagined Theatres*. Other directing credits include *Falling*, *Circle Mirror Transformation*, and *Eurydice* at Pepperdine, and *Three Views of the Same Object* at Rogue Machine Theatre. Starr has provided voice and dialect coaching for numerous productions including *Joe Egg* (Odyssey), *Miss Lilly Gets Boned* (Rogue Machine), and *Tracers* (USVAA) and many Pepperdine theatre productions, including *Miss Bennett: Christmas at Pemberley*, *Curtains*, *South Pacific*, *Heritage*, *Medea*, and *The Interference*. Starr's acting credits include *Yard Sale Signs* and *Milkmilklemonade* at Rogue Machine, *A Chicago Christmas Carol* at Crown City Theatre, *Small Tragedy* at the Odyssey (for which Starr received an Ovation Award nomination), *Vieux Carre* at the Ivy Substation, *Window Of Opportunity* at the Met, and productions at the Fountain Theatre, the Actors' Gang, and more. Starr performed her one-woman show *My Dad Came Dressed as Marilyn Monroe* at Highways Performance Space and at the Hysteria Festival in Toronto, Canada. Starr is a founding member of Rogue Machine Theatre Company and on the board of Trade City Productions, which operates Los Angeles' very first mobile theatre truck. Starr received her MFA in acting from UCLA's School of Theatre, Film and Television. She is a lifetime member of the Actors Studio and is a designated Linklater Voice teacher.

Cathy Thomas-Grant (Director) trained at the American Conservatory Theatre, San Francisco. She has served as the Pepperdine Scotland Program Director since 2000 and is currently in her twenty-third year as theatre faculty. Productions for the Fringe include: *Mr. Happiness/The Water Engine*, *Necessary Targets*, *The Kentucky Cycle*, *The Fastest Woman Alive*, *Language of Angels*, musical direction for *The Grapes of Wrath*, *Forget Fire* in collaboration with J. C. Marshall, *The Abode* by Davey Anderson, and the Fringe First Award-winning productions of *Why Do You Stand There in the Rain?* by Peter Arnott (2012) and *The Interference* by Lynda Radley (2016). Selected Pepperdine directing credits include *Futureproof*, *Big Fish*, *Heritage* by Nicola McCartney, *Les Misérables*, *Sweeney Todd*, *The Seagull* (translation by Martin Crimp), Michael Redhill's *Goodness*, *The Rivals*, *Fiddler on the Roof*, *King Lear*, *Man of La Mancha*, *Much Ado About Nothing*, and *Death of a Salesman*. Selected professional acting credits include: *The Imaginary Invalid*, *Judevine*, 1918, the premiere of Jane Anderson's *Food and Shelter*, *A Funny Thing Happened on the Way to the Forum*, and Nagel Jackson's adaptation of *A Tale of Two Cities*, (American Conservatory Theatre of San Francisco), *The Comedy of Errors*, *A Winter's Tale*, *Macbeth*, and *Tartuffe*, (American Players Theatre of Wisconsin) *Steel Magnolias* and *The Octet Bridgeclub* (Actors Co-op of Hollywood). Thomas-Grant is a recipient of the Howard A. White Award for Teaching Excellence.

Michael Thomas-Visgar (Assistant Director) is an actor and director based in Los Angeles. Thomas-Visgar most recently produced and directed *YouTube Rewind: The Musical 2020* for Michelle Khare. He also directed *YouTube Rewind: The Musical 2019* which has over two million views. His former production directing credits include L.A. Time Critic's Choice *The Mongoose* (The Road Theatre Company), *And Then There Were None* (Morgan-Wixson), *Moon Over Buffalo* (Morgan-Wixson), *A Midsummer Night's Dream* (Hollywood Fringe Festival), Winner of Best Cabaret & Variety in Hollywood Fringe Festival – *Thenardier's Inn* (CAC Studios), *Staged Readings Onlyland* (The Road Theatre) starring Stephen Tobolowsky, and *The Liar Paradox* (The Road Theatre). Thomas-Visgar's regional performing credits include *Ragtime* (Willie Conklin) at the Pasadena Playhouse, *Man of La Mancha* (Dr. Carrasco) at San Diego Musical Theatre, *Parade* (3D Theatricals), *Man Of La Mancha* (McCoy Rigby), *Frozen: Live at the Hyperion* (Disney California Adventure), Jean Valjean in *Thenardier's Inn*, a parody re-telling of *Les Misérables*, 1776 (Joseph Hues) Moonlight Amphitheater staged reading, *Seminar* (Leonard), *A Midsummer Night's Dream* (Bottom) and Johnny in the Scotland National Tour of *Why Do You Stand There In The Rain?* as well as the US premiere. Thomas-Visgar would like to thank Alison, his fiancée, Cathy, the cast, Harper, Connor and the designers and crew! Thomas-Visgar will receive his MA in Arts & Culture Management, with a concentration in Advocacy & Outreach from The University of Denver in June of this year. For more information on Thomas-Visgar please visit his website at michaeltomasvisgar.com.

Harper Tramm (Stage Manager) is a sophomore theatre production and design student with an emphasis in stage management, from Keller, TX. Some of her most recent Pepperdine Theatre credits include *Ragtime* (Assistant Stage Manager), *Men On Boats* (Stage Manager), *Miss Bennet: Christmas at Pemberley* (Crew), *Fine Arts Cabaret* (Marketing), and *Dido and Aeneas & Gianni Schicchi* (Crew). Tramm is absolutely thrilled to be working with this cast and crew, Cathy, Michael, and Connor. She would also like to thank her mom and dad for always encouraging her to achieve her dreams, and support her love of the arts. She would also like to offer special thanks to her stage manager mentor, Yelena Babinskaya, for all of her advice, support, and help these last few months! Tramm is a recipient of the George Pepperdine Achievement Award and the Pepperdine Theater Arts Scholarship.

Melanie Watnick (Costume/Hair & Make-Up Designer) has been designing and teaching at Pepperdine University for over eight years. Her costume designs for dance have been seen in both national and international tours with such companies as ABTII, Ballet X, Corbin Dance, Company C, Complexions Contemporary Ballet, Kansas City Ballet, Singapore Dance Theatre, Malashock Dance, Backhaus Dance Ballet West, and Norwegian Cruise Line. Theatre designs include work with companies such as Julliard, Seattle Repertory, San Diego Repertory Theatre, the Barter, Great Lakes Theater Festival, South Coast Repertory Theatre, the Open Fist, Boston Court, the Flea, and Rouge Machine and Circle X. She has guest lectured and designed at UC San Diego, UC Irvine, and Hartnell College. Watnick received her MFA from UC San Diego and a BA with a distinction in her major from UC Santa Barbara.



RECORDED MUSIC USED IN THIS PRODUCTION

WHEN JOHNNY COMES

MARCHING HOME (1863)

Composed by Patrick Gilmore

Performed and arranged by

Glen Navis

THRU THICK NIGHT

Composed and performed by

Erik Enocksson

Kning Disk (2007)

Re-release Posh Isolation (2017)

ELEGY

Composed and performed by

Balmorhea

Western Vinyl (2009)

BOOKENDS

Composed and performed by

Simon and Garfunkel

Columbia Records (2008)

THE JOY OF D.H. LAWRENCE

Composed and performed by

Erik Enocksson

Kning Disk (2007)

Re-release Posh Isolation (2017)

PART TWO

Composed and performed by

Leo Kotke (1981)

Columbia Records (2008)

ACKNOWLEDGEMENT & THANKS

Special thanks to Jordan Jarvis, Glen Navis, Alison Borise, Sophia Gibbons, Mark Roosa, the Genesis Lab at Pepperdine Libraries, Jaimie Beth Colvin, Hollace Starr, Bradley Griffin, Rick Aglietti, Stewart O'Rourke, Kelly Klopp, and Kate Parsons.

WE GRATEFULLY ACKNOWLEDGE OUR ANNUAL DONORS

DISTINGUISHED BENEFACTORS

Howard and Roberta Ahmanson
Kenny G. Endowed Scholarship
(Kenneth B. Gorelick)
David Ferguson
Luciana* and Daniel Forge
David Huenergardt*
The Jonathan Club
Allan Kwong Family
Annette Oltmans and J.O. Oltmans II
Mary Pickford Foundation
Pickford-Stotsenberg Endowment
Chloe H. Ross
Flora L. Thornton*
Laurie and Jeff Ubben

CENTER FOR THE ARTS CHANCELLOR'S CIRCLE

Performance Sponsors

The Office of the Chancellor of
Pepperdine University
Anne Marie and Mitch Bredefeld
Crest Associates
Melanie and Richard Flamminio
Lisa Freer
David Huenergardt*
Billie Milam Weisman
Lisa Smith Wengler

Supporting Sponsors

Mary and Tom Hawkins
Michelle and Mark Hiepler
Ellen and Doug Weitman

Contributing Sponsors

The Anza Hotel
Shelley and Rick Bayer
Debby and Andy Benton
Marguerite Brown
Kathy and Lou Colombano
Food Fetish Catering
Marmalade Café
Marcia and Henry Lawson
Paula and Rick Marrs
Marnie and Tom Mitze
Lucy and Tim Perrin
Nancy and Jeff Pippin
Helene and Robert Schacter
Paula Mae and Steve Schwartz
Gail and Jim Wilburn

FRIENDS OF THE THEATRE MEMBERS

Platinum Theatre Members

Jackie and Bob Bigelow
Amanda Carungi
Kala and John Grogg
Jan and Tim Willis

Gold Theatre Members

Nancy and Dan Bishop
Pamela and Raymond Hebel
Connie and Tim Horton
Dawn Pettersen
Jerry Warkans

Sterling Theatre Members

Lynn Dralle
Rosemarie and Gerhard Ihde
Linda and John Katch
Elisa and Steven Klein
Ken Kofman
Carole Mason-Stark and Dan Stark
Mary Ellen and Marshall Waller

Silver Theatre Members

Pam and Mike Davis
Susan and Gary Hope
Juanita Kamm
Constance Slade

**in memoriam*

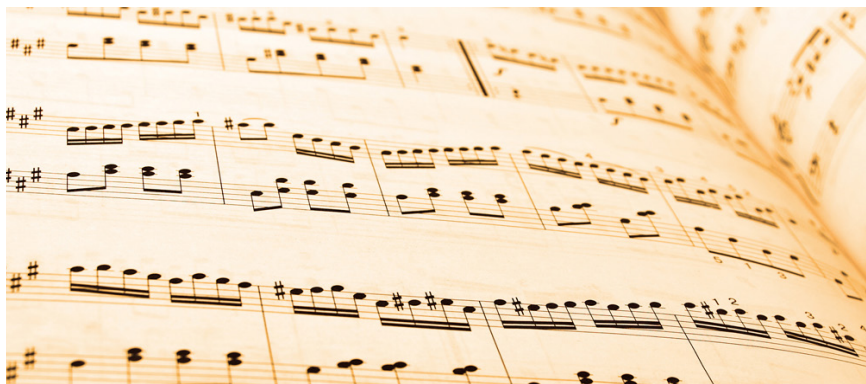
*Donor listings as of
3/29/2021.*

The Friends of the Theatre supports theatre students by hosting master classes, providing potluck lunches during production weeks, financially supporting Pepperdine's participation in the Edinburgh Festival Fringe, and more. For additional information on the Friends of the Theatre and to learn more about how to get involved, contact the Lisa Smith Wengler Center for the Arts at 310.506.4594.

The Mary Pickford Foundation and the late Dorothy and Edward Stotsenberg of Malibu have provided generous support to student scholarships for Pepperdine University fine arts majors.

A gift to Seaver College's Fine Arts Division helps to enhance the arts and advance excellence in teaching. If you have an interest in supporting the fine arts at Pepperdine, please contact Lou Drobnick, Senior Vice Chancellor for Advancement and Public Affairs, at 310.506.6432 or email lou.drobnick@pepperdine.edu.

PEPPERDINE FINE ARTS DIVISION UPCOMING DIGITAL PERFORMANCES



MASS OF THE CHILDREN BY JOHN RUTTER

A Virtual Benefit Concert for RaisingHope
Featuring the Pepperdine Concert Choir and Friends

Ryan Board, Director

Hiroyo Hatsuyama, Pianist

Kevin Su Fukagawa, MIDI Orchestration

Kaytlin Withers, Jack Gerding, Soloists

This concert features the Pepperdine Concert Choir performing John Rutter's beautiful *Mass of the Children*. This virtual presentation will benefit RaisingHope, which is a local organization committed to helping children in Southern California's foster care system.

Friday, May 14, 2021 • 7:30 PM PDT

Digital performances are free, but advanced registration is required.

Visit arts.pepperdine.edu for more information.

To stay updated on all upcoming events at Center for the Arts, please join our email list by visiting arts.pepperdine.edu/visit/email-list.htm.

PEPPERDINE

24255 Pacific Coast Hwy, Malibu, California 90263
310.506.4000 • www.pepperdine.edu