

Smothers Theatre Rental Technical Specifications

Pepperdine University

Staff Contacts

Theatre Operations Manager

Paul Vacchiano

E: Paul.Vacchiano@Pepperdine.edu

P: 310-506-4079

Hospitality, Merchandise Advance

Director of Production

Danielle Lobello

E: Danielle.Lobello@Pepperdine.edu

P: 310-506-4752

Production and Schedules Advance

Box Office and Patron Communications Manager

Tyler Gabbard

E: Tyler.Gabbard@Pepperdine.edu

P: 310-506-6481

Production Manager

Nathan Grater

E: Nathan.Grater@Pepperdine.edu

P: 310-506-4224

From Pacific Coast Highway, turn onto Malibu Canyon Road (northbound). At the first traffic light, Seaver Drive, turn left and enter the campus.

From the Ventura Freeway (US 101), exit at Las Virgenes Road, Malibu Canyon. Head south on Las Virgenes (which turns into Malibu Canyon Road) for 10 miles to Seaver Drive. Turn right on Seaver Drive and enter the campus. At the booth, ask for directions to the theatre. The theatre is adjacent to the Seaver College Main Lot (Lot B).

Technical Specifications

All technical needs and staffing must be advanced at least one month prior to the performance.

Crew

The minimum back of house crew is three persons and a Technical Supervisor. The Center for the Arts may require additional crew based on show needs.

All Federal and California labor laws will be followed.

Smothers Theatre House Capacity

Without Seated Pit: 448 capacity in 15 rows

With Seated Pit: 508 capacity in 18 rows

Stage Dimensions

Proscenium Height: 20'-0"

Proscenium Width: 42'-0"

Stage Depth with lowered pit: 36'-6"

Stage Depth with raised pit: 46'-8"

Stage Width including wings: 76'-0"

Scenery Door USC: 17'-6"h by 12'-0"w

Stage Floor

The wooden stage floor is covered with ¼" tempered fiber hard board.

The floor is painted matte black.

Holes and screws may be used in the floor with approval. Tenant is responsible for repairing any large holes as deemed necessary by theatre representative.

Fly System

All flies must be operated by paid Center for the Arts Personnel.

Rigging Information

Batten High Trim: Varies for each pipe due to building architecture.

Batten Low Trim: 3'-0" above stage floor

House Pipes: All battens are pipe construction with 54'-0" width, some are adjustable to 60'-0" wide

House soft goods may not be moved for rentals unless approved in advance. Please advance any additional rigging items.

Line Sets

32 sets with 9" center and 6 lift lines

Single purchase manual control

Arbors

All arbors are 5'-0" length with 1200lb capacity

Rigging Schedule:

See additional PDF attachment

Soft Goods

Main Curtain:	2@ Red Velour, 75% fullness (traveler)
Black Velour Borders:	4@ 60'-0"w x 8'-0"h
Black Velour Legs:	3@ 13'-0"w x 28'-0"h 1@ 16'-0"w x 30'-0"h
Speakers Curtain:	2@ 27'-0"w x 23'-10"h, 50% fullness (traveler)
Mid Stage Black:	2@ 22'-0"w x 24'-0"h, 50% fullness
Up Stage Full Black:	4@ 20'-0"w x 28'-0"h, flat black
White Cyclorama:	1@ 60'-0"w x 28'-0"h
Scrim:	1@ 60'-0"w x 30'-2"h

Backstage Facilities

Loading Area

Location:	Rear of facility with no dock. Load-In is stage level through the scene shop.
Loading Bay Dimensions:	23'-0"w x 29'-0"d
Loading Door:	9'-10"w x 10'-0"h

CFA does not have access to a scene shop. All painting and repairs must take place on stage or off site.

Wardrobe

Location:	Stage Level
Dressing Rooms:	2 chorus rooms located in hallway off stage right
Green Room:	1 Green room located in hallway off stage right.
Locker Rooms:	2 locker rooms, male and female
Quick Change:	Portable quick change locations available upon advance
Additional Space:	Larger classroom or black box theatre available for warm up or dressing spaces, additional cost for use

Restrooms: Restrooms are shared with working student/staff personnel. Separate from audience.

Electrics

Company Switch

1-250amp 3 phase company switch with Cam-Lok – Use must be advanced

Stage Lighting Control

All lighting must be operated by paid Center for the Arts Personnel

ETC Ion 2000 with 40 fader wing

2 Universes: Universe 1 – Conventional Fixtures, Universe 2 – Intelligent Fixtures

Show Position: in upper center booth at rear of auditorium

Dimmers/Patching

Type: ETC Sensor dimmers

Connection: Stage Pin

Number: 250

Wattage: 2.4k ea.

Conventional Instrument Inventory

Conventional lights will be in House Plot unless otherwise advanced. This includes:

- Front Cool and Warm Wash

- Top Light systems in Red, Blue and Amber

- High Side Breakup and Warm System

- 9 onstage specials

- 5 specials from FOH

- 3 two-fered circuits/specials from balcony rail

- ETC Source 4 Lustr+ Cyc Lights

- Disco Ball as advanced

- Dance Booms as advanced

- Additional lights can be added per advance

House Plot:

See additional PDF attachment

Intelligent Lighting Inventory

Only available with additional paid Center for the Arts programmer

Position of these cannot be moved from their house plot locations.

4-Vari-Lite VL1000AI Moving Lights

2-Robe Colorspot 575 AT

Follow Spots

Only available with additional paid Center for the Arts operator(s)

2-Lycian Midget Spotlights located in the audience left and audience right sections of the upper booth.

Spotlights may not be moved from their locations

Haze

1-DF-50 Hazer (must be advanced as per fire policy)

Only available with dedicated Center for the Arts Fire Watch Personnel.

If haze is used, the double doors on either side of the backstage hallway must remain closed as per LA County Fire Code.

Projection Equipment

Only available with additional paid Center for the Arts operator(s).

Projection screen: 15'2" x 20'4" front projection screen

Projector: Panasonic PT-DZ10K 10,500 Lumens, 16:10 Aspect Native, Full HD

Location: Center Light Booth

Lens Options: Long Throw Lens – ET-D75LE30 (in projector)

Short Throw Lens – ET-D75LE6 (available per advance)

Playback Options: PC computer with Power Point, Windows Media Player and VLC Player

DVD Player

VGA connection for renter provided computer. Renter must supply necessary adapter to convert to VGA.

Sound Equipment

All audio equipment must be operated by paid Center for the Arts Personnel.

The mix position is located at house left behind the last row of seats approx. 65' from edge of stage.

Position cannot be moved. There is a 5' x 5' location audience right of the house mix position for a road mix position. Our house dB limit is 95 dB C weighting.

FOH Equipment

FOH Console: Yamaha CL5: 72 mono/8 stereo/24 aux/8 matrix/8FX/16 DCA

Stage IO: 1-Yamaha RIO1608-D

1-Yamaha RIO3224-D

FOH IO: 2-Yamaha TIO1608-D

FOH Speakers: 3-L'Acoustics Arcs WIFO (Flown per side)

1-L'Acoustics SB18 (Flown per side)

1- L'Acoustics SB18 (Ground stacked per side)

4-L'Acoustics X8 (Front Fill System)

2-Danley SM60F (Center Cluster)

All Amps are L'Acoustics LA4X

Monitor Speakers: 10-L'Acoustics X12 (Includes Cue)

All Amps are L'Acoustics LA4X

Video Taping

Audio feed is possible for videotaping purposes however it must be requested no later than one hour to show time.

LA County Fire Code requires blocking off rows if necessary due to camera equipment, please consult CFA Staff for best locations to place video equipment.

Communications and Paging

Clear-Com headset communications available to all necessary stations. Single channel operation. There is a stage audio monitor to control booth and dressing rooms.

Monitor System

There is no in house monitor console or split snake. All monitors are mixed from FOH.

Additional Equipment and Accessories

Microphones, wired and wireless (list available upon request and must be advanced)

Microphone stands

Choral Risers and orchestra shell (at additional cost)

Music stands and chairs

Vinyl Dance floor (at additional cost)

9' Steinway Hamburg Model D (at additional cost of piano tuning)

Genie GS- 1930 Scissor Lift

JLG 20MVL Personnel Lift

General Info

Pepperdine is a dry campus and no alcohol is allowed. No food or drink is allowed in backstage, on stage or in the house besides water. Smoking is only allowed in designated areas on campus. Open flames are not permitted in the theatre. Firearms, live explosives and lasers require prior approval and possible additional Center for the Arts staff. Shoes must be worn at all times in Smothers Theatre and can only be removed when going on stage.

Parking Info

Parking is worked out as per advance. We can make space for a 53' Semi and a level parking surface for a tour bus. When the tour bus has a trailer, there is a 150' downhill push to the loading dock. There is no shore power. Generators are fine to run. Semi-trucks and busses are not permitted to enter campus before 7:00am because of nearby residential housing.

Lobby Use

In order to use the front doors of the lobby, a House Manager must be present. If a backstage crew is here, the lobby can be accessed but only through the theatre, not through the front doors. We can provide tables in our lobby plus chairs for use by renters. If your sales personnel accepts and processes credit cards, the University's Wi-Fi or wired networks may not be used for processing credit cards.

Outside Rental Companies

Renters are allowed to set up additional outside rentals to be delivered at the venue day of for the show. Any deliveries or pick-ups need to be coordinated in advance and companies need to be approved by CFA staff.

Storage and Dead Cases

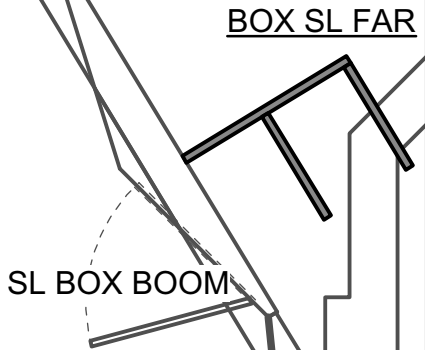
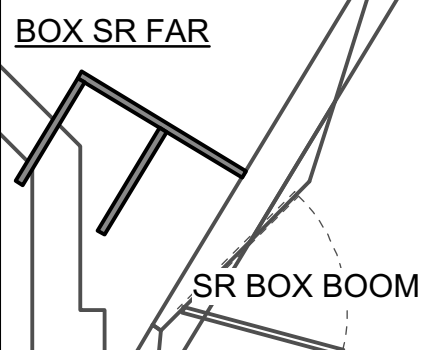
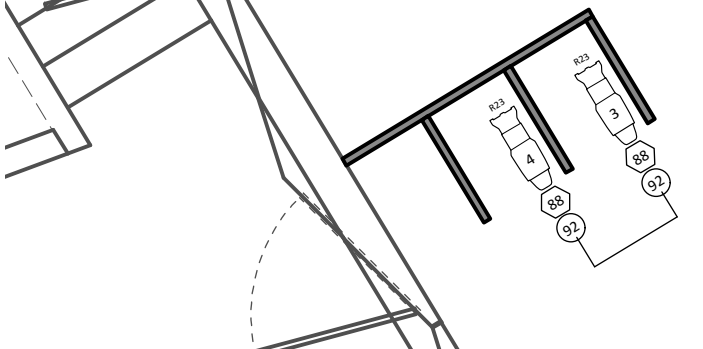
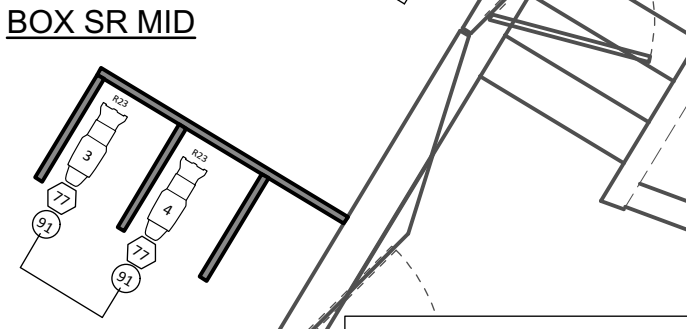
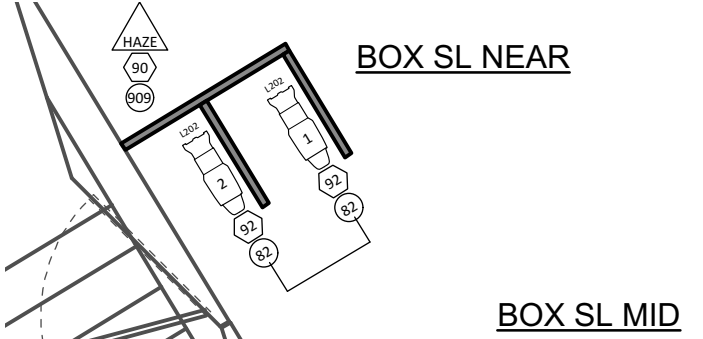
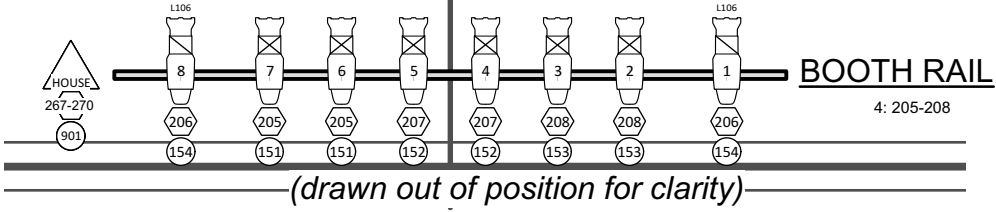
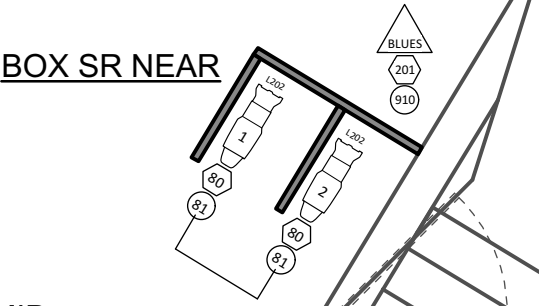
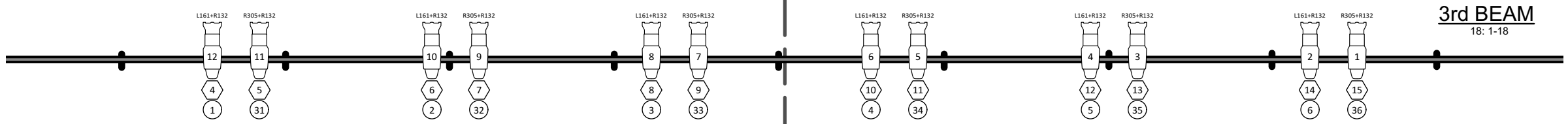
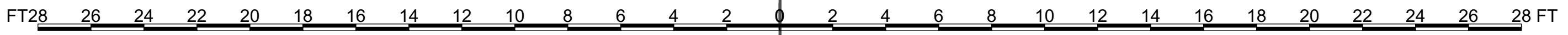
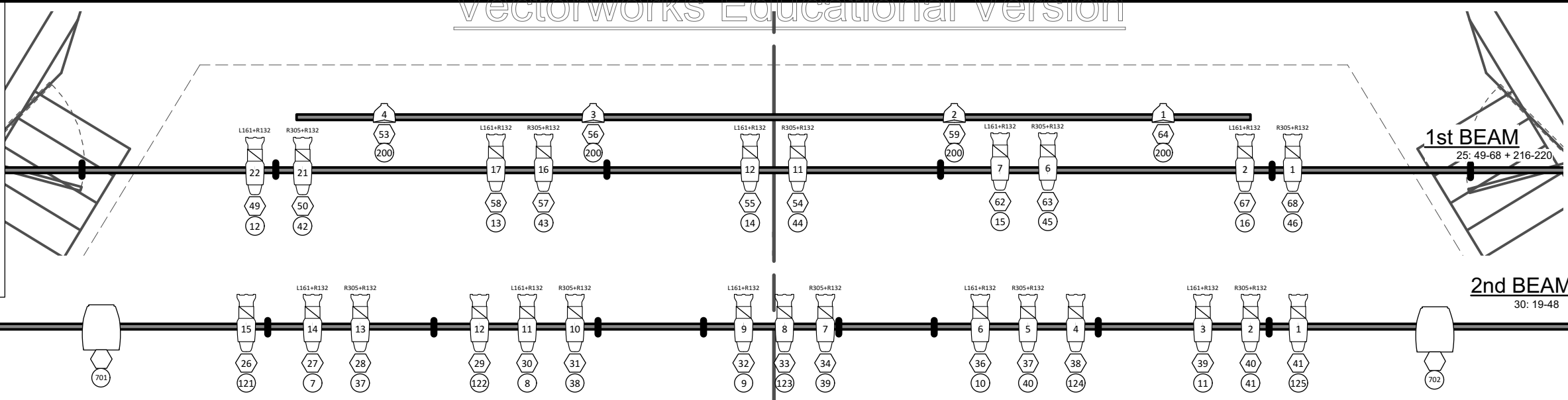
Because of the strict fire codes, no storage of dead cases, instruments, costumes, boxes, or other miscellaneous touring equipment may occur in the hallways surrounding the theatre. Our scene shop is also unavailable for storage because of its continual use. All storage must occur in designated locations on stage or as directed by the Center for the Arts staff.

Wi-Fi Information

How to Connect: First, connect to the “Pepperdine” network. Open a web browser on your device and visit any webpage. You will be redirected to WavesConnect. If you are not, go to pepperdine.edu/wavesconnect. Click start and select the “Visitor” heading. After you select this you will be required to agree. Click register and after a short period your internet will be ready for use. This must be done every 24 hours.

Label Legend

- R64 ← Color
- ① ← Template
- 3 ← Unit Number
- 257 ← Dimmer
- 101 ← Channel



Color Summary

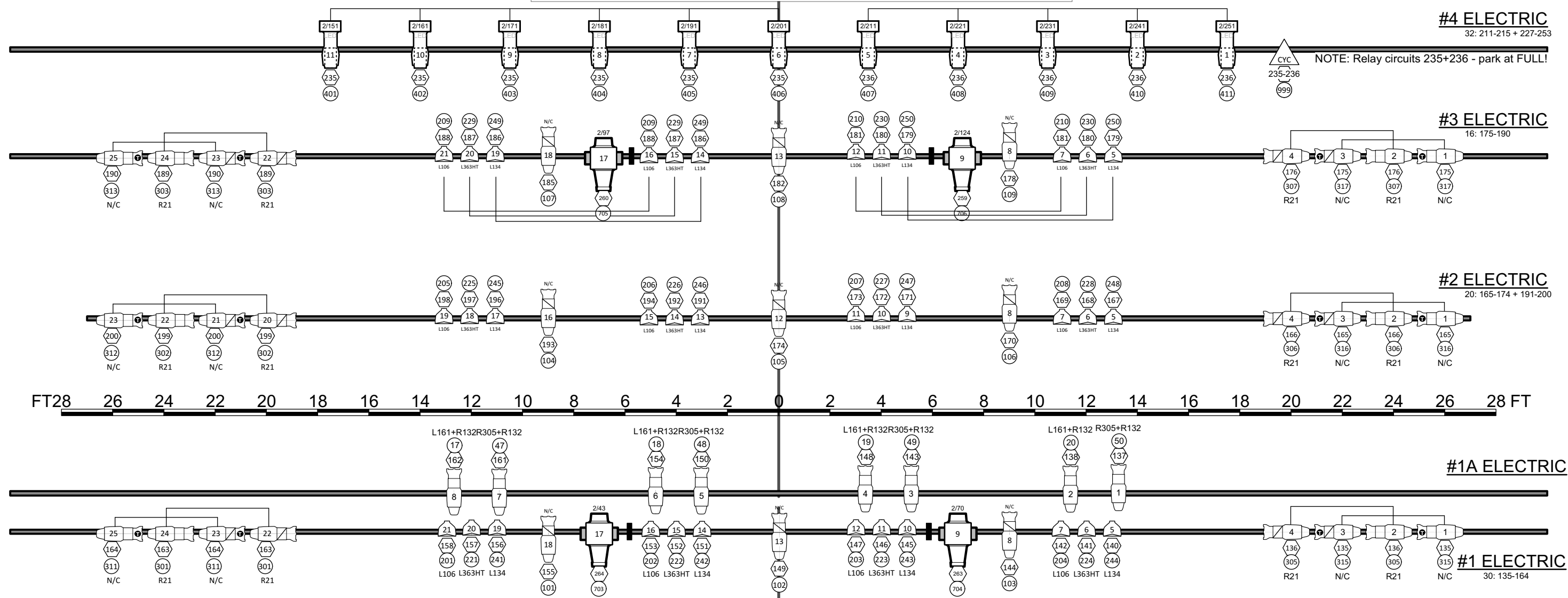
Color	Size	Count
● L106	6.25"	2
● L161+R132	6.25"	16
● L202	6.25"	4
● R23	6.25"	4
● R305+R132	6.25"	16

Instrument Key

	Etc Source 4 19deg
	ETC Source 4 26°
	Etc Source 4 36deg
	Source 4 PAR WFL
	Robe ColorSpot 575 AT

LISA SMITH WENGLER CENTER FOR THE arts PEPPERDINE

Show	House Repertory Plot	
Theatre	Smothers Theatre	Plate #1 (of 3)
Subject	Beams Over House	Scale 1/4" = 1'
Revised	June 1, 2016	



#4 ELECTRIC
32: 211-215 + 227-253

NOTE: Relay circuits 235+236 - park at FULL!

#3 ELECTRIC
16: 175-190

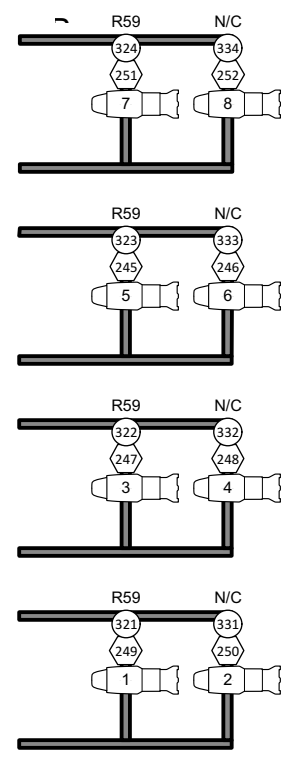
#2 ELECTRIC
20: 165-174 + 191-200

#1A ELECTRIC

#1 ELECTRIC
30: 135-164

FT28 26 24 22 20 18 16 14 12 10 8 6 4 2 0 2 4 6 8 10 12 14 16 18 20 22 24 26 28 FT

L161+R132R305+R132
L161+R132R305+R132
L161+R132 R305+R132
L161+R132 R305+R132



SR TAB

Instrument Key

- Etc Source 4 19deg
- ETC Source 4 26°
- Etc Source 4 36deg
- S4 LED
- Source 4 PAR WFL
- VL-1000

Color Summary

Color	Size	Count
● L106	7.5"	12
● L134	7.5"	12
● L161+R132	6.25"	4
● L363HT	7.5"	12
● N/C	6.25"	29
● R21	6.25"	12
● R305+R132	6.25"	4
● R59	6.25"	8

Label Legend

- ← Color
- ← Template
- ← Unit Number
- ← Dimmer
- ← Channel

LISA SMITH WENGLER
CENTER FOR THE
arts
PEPPERDINE

Show
House Repertory Plot

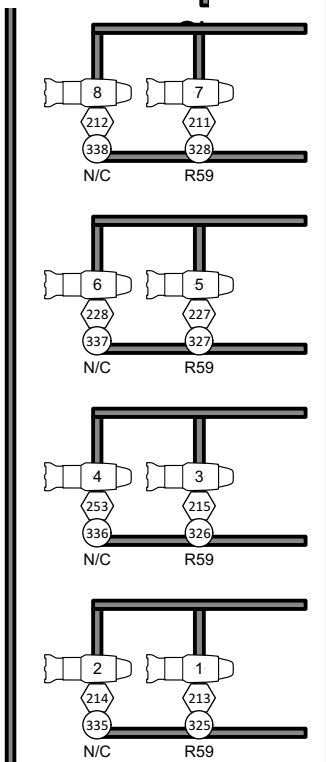
Theatre
Smothers Theatre

Subject
Above Deck Electrics

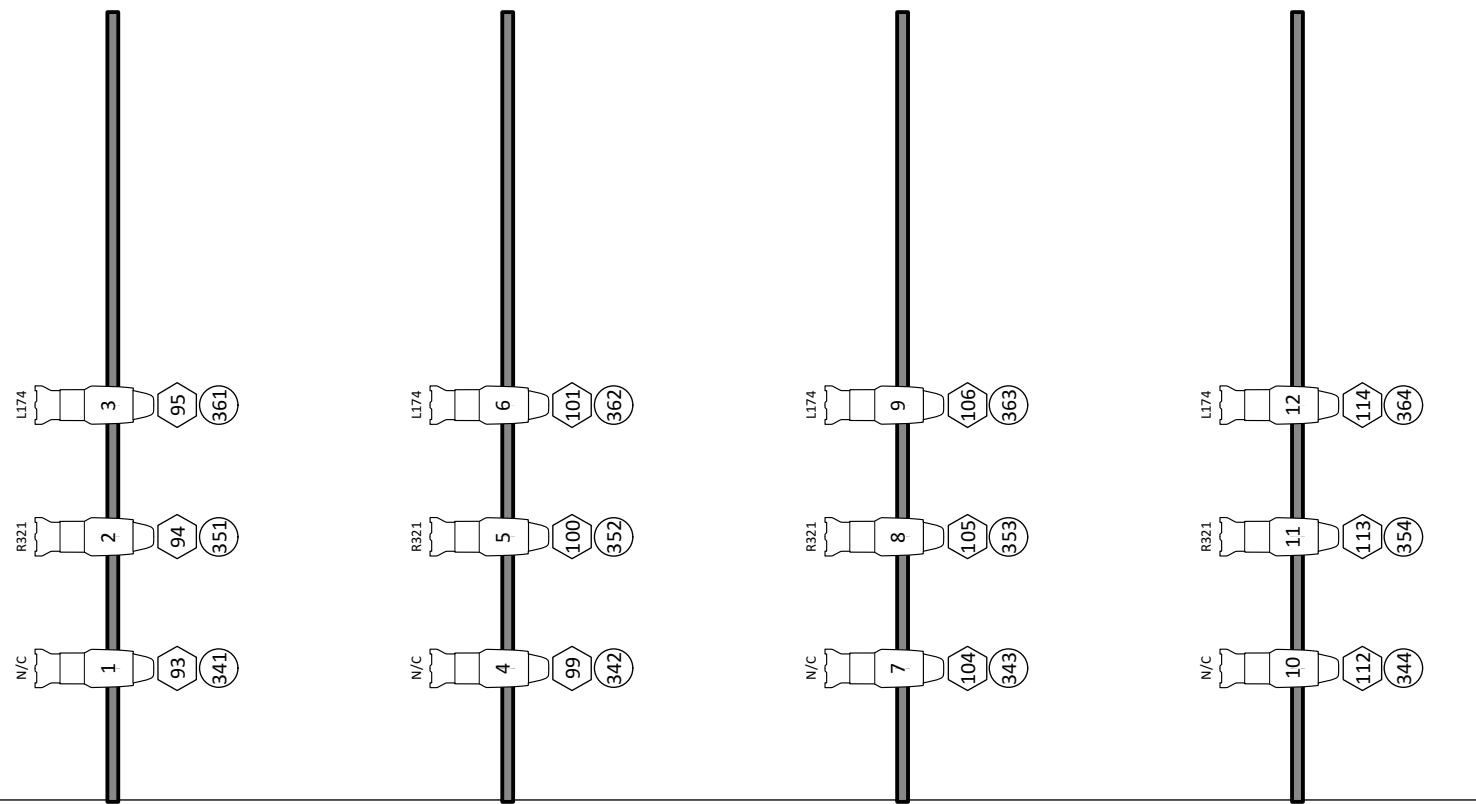
Revised
June 1, 2016

Plate
#2
(of 3)

Scale
1/4" = 1'

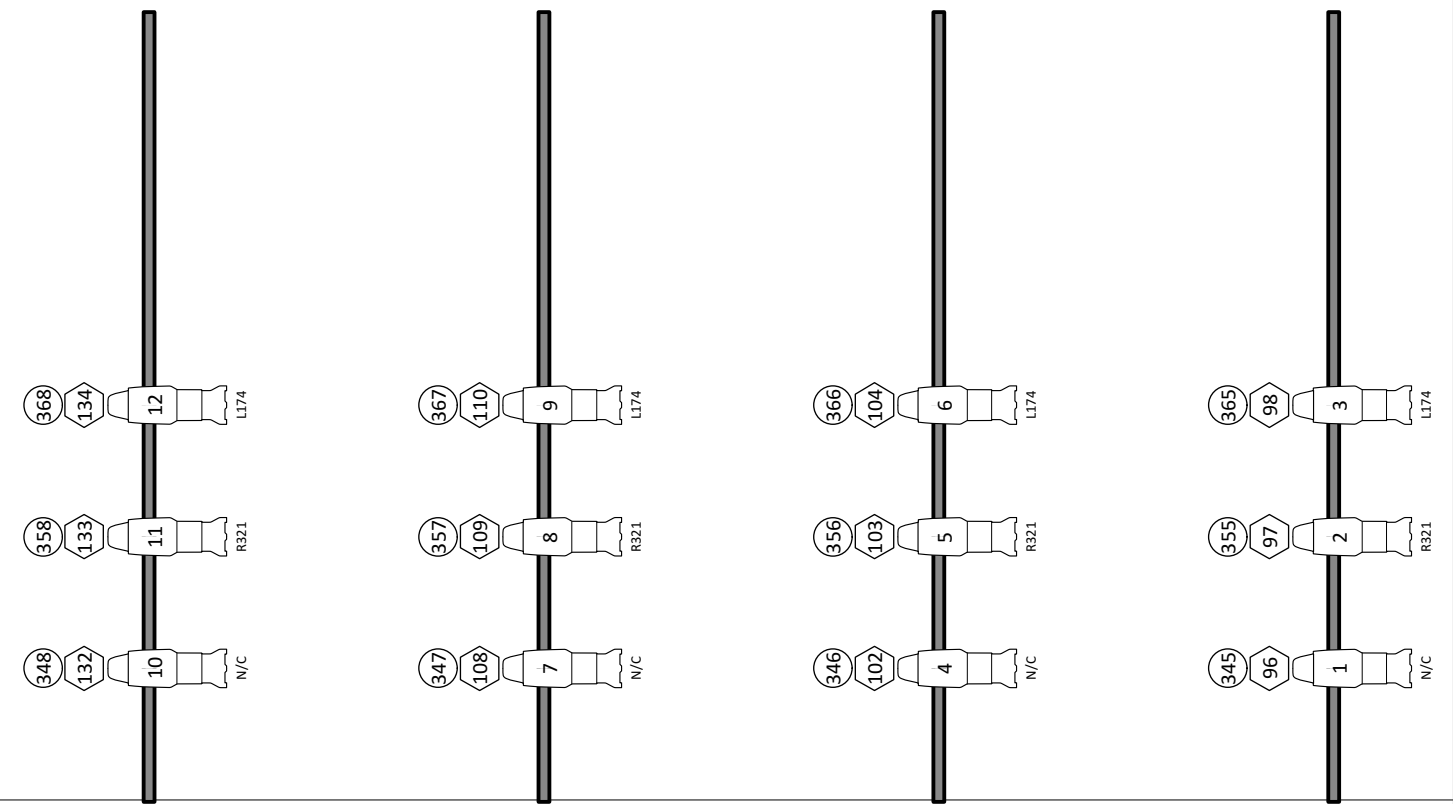


SL TAB



←----- DS

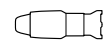
SR DANCE BOOMS






SL DANCE BOOMS

DS ----->

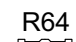

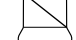
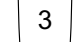

Instrument Summary

 Etc Source 4 36deg

Color Summary

Color	Size	Count
 L174	Source 4 36deg	8
 N/C	Source 4 36deg	8
 R321	Source 4 36deg	8

Label Legend

-  ← Color
-  ← Template
-  ← Unit Number
-  ← Dimmer
-  ← Channel

<p>LISA SMITH WENGLER CENTER FOR THE arts PEPPERDINE</p>		Show House Repertory Plot
		Theatre Smothers Theatre
Subject Booms On Deck		Plate #3 <i>(of 3)</i>
Revised June 1, 2016		Scale 1/4" = 1'

Pepperdine University
Center for the Arts

Lineset Schedule Detail
As of 17-Jul 2016

Lineset	Distance from Plaster Line	MAX Out Trim	MAX Out Trim w/ SR Extension Out 2'-6"	Purpose	Length	Extensions Available Each Side	Length w/ Extensions	Notes
32	30'-0"	52'	*same*	Cyclorama	60'	--	--	
31	29'-6"	52'	*same*		54'	2 @ 3'	60'	
30	29'-0"	52'	*same*		54'	2 @ 3'	60'	
29	28'-3"	52'-7"	*same*	FULL BLACK #3	54'	2 @ 3'	60'	
28	27'-6"	57'-6"	*same*		54'	2 @ 3'	60'	
27	26'-6"	57'-3"	*same*		54'	2 @ 3'	60'	
26	25'-10"	57'	*same*		54'	2 @ 3'	60'	
25	24'-5"	49'-4"	*same*	LEGS #4	54'	2 @ 3'	60'	
24	23'-6"	28'-1"	*same*	ELECTRIC 4	60'	--	--	
23	22'-2"	49'-6"	*same*	BORDER #4	54'	2 @ 3'	60'	
22	21'-6"	55'-8"	53'-7"		54'	2 @ 3'	60'	
21	20'-10"	55'-5"	53'-7"		54'	2 @ 3'	60'	
20	19'-4"	31'-7"	*same*	ELECTRIC 3	60'	--	--	
19	18'-4"	54'-10"	53'-7"		54'	2 @ 3'	60'	
18	17'-8"	54'-6"	53'-7"	Legs/Border #3	54'	2 @ 3'	60'	
17	16'-10"	54'-3"	53'-7"		54'	2 @ 3'	60'	
16	16'-0"	54'-0"	53'-7"	FULL BLACK #2	54'	2 @ 3'	60'	
15	15'-4"	53'-9"	52'-0"	Black Scrim	54'	2 @ 3'	60'	
14	14'-6"	46'-5"	*same*		54'	2 @ 3'	60'	
13	13'-0"	30'-1"	*same*	ELECTRIC 2	60'	--	--	
12	12'0"	51'-2"	*same*	LEGS & BORDER #2	54'	2 @ 3'	60'	
11	11'-0"	52'-5"	*same*		54'	2 @ 3'	60'	
10	10'-0"	52'-6"	*same*	Speaker's Curtain (Black)	54'	2 @ 3'	60'	Has Travel Track
9	9'-4"	52'-0"	*same*	Projection Screen	54'	2 @ 3'	60'	
8	8'-8"	51'-9"	*same*		54'	2 @ 3'	60'	
7	8'-0"	51'-6"	*same*	Border #1	54'	2 @ 3'	60'	
6	7'-4"	51'-3"	*same*	Leg #1	54'	2 @ 3'	60'	
5	6'-2"	***	*same*	ELECTRIC 1A (tied to 1)	54'	2 @ 3'	60'	Tied to LS 4
4	4'-8"	26'-6"	*same*	ELECTRIC 1 (tied to 1A)	60'	--	--	Tied to LS 5
3	-----	-----	-----	**Side Tab Electrics**	2 @ 28'	--	--	2 Tabs on the SAME Arbor
2	3'-0"	***	*same*	House Portal	54'	2 @ 3'	60'	Has Travel Track
1	2'-0"	***	*same*	House Grand Drape	60'	--	--	
0	0'-6"	49'-6"	*same*		54'	2 @ 3'	60'	
00	0'-0"	***	*same*	Procenium Portal	42'	--	--	