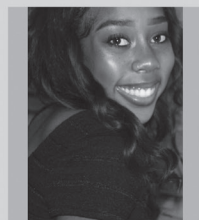


# FIRST-YEAR SHOWCASE

FRIDAY, SEPTEMBER 18, 2020 • 7:30 PM  
SATURDAY, SEPTEMBER 19, 2020 • 2 PM



PEPPERDINE UNIVERSITY FINE ARTS DIVISION  
THEATRE PROGRAM  
presents

# FIRST-YEAR SHOWCASE

## *The Human Touch*

**Friday, September 18, 2020 • 7:30 PM**

**Saturday, September 19, 2020 • 2 PM**

Director	Bradley Griffin
Stage Manager	Wesley Morrissey
Production Manager/ Technical Producer	Yelena Babinskaya
Sound Designer/Recording Engineer	Sean Allinson
Assistant Stage Manager	Stella Engel
Assistant Stage Manager	Connor McKenzie

# Cast

Talia Jackson	Atossa
Chloe Johnson	Angela
Kayla Bryant	Harper Pitt
Matthew Dylan	Mark Rothko
Peyton Walker	Sarah
Zoe Gordon	Nora Helmer
Chloe Higgins	Jane
Holly Jackson	Nora Helmer
Carly Shea Condon	Blanche
Raquel Ferreira	Emmy Helmer
Hannah Keaton	Sophie
Jackson Murrieta	Charlie Brown
Hannah Sedlacek	Alma
Luke Creal	Pip
Cole Wagner	Jim, the Gentleman Caller
Joyce Lee	Sonia

---

# Performance

—Part 1: Only in My Dreams—  
Encountering the Superb, the Scary, and the Surreal

## Talia Jackson

*The Persians* by Aeschylus, adapted by Ellen McLaughlin  
Jackson will be portraying the role of Atossa

## Chloe Johnson

*Natural Shocks* by Lauren Gunderson  
Johnson will be portraying the role of Angela

## Kayla Bryant

*Angels in America: Millennium Approaches* by Tony Kushner  
Bryant will be portraying the role of Harper Pitt

**Matthew Dylan**

*RED* by John Logan

*Dylan will be portraying the role of Mark Rothko*

**Peyton Walker**

*The Antipodes* by Annie Baker

*Walker will be portraying the role of Sarah*

**—Part 2: Family Ties—  
Loving and Letting Go**

**Zoe Gordon**

*A Doll's House* by Henrik Ibsen

English language version by Simon Stephens

*Gordon will be portraying the role of Nora Helmer*

**Chloe Higgins**

*Mother Teresa Is Dead* by Helen Edmundson

*Higgins will be portraying the role of Jane*

**Holly Jackson**

*A Doll's House, Part 2* by Lucas Hnath

*Jackson will be portraying the role of Nora Helmer*

**Carly Shea Condon**

*Brighton Beach Memoirs* by Neil Simon

*Condon will be portraying the role of Blanche*

**Raquel Ferreira**

*A Doll's House, Part 2* by Lucas Hnath  
*Ferreira will be portraying the role of Emmy Helmer*

— **Part 3: Just Friends/Just Friends?**—

**Hannah Keaton**

*Boys* by Ella Hickson  
*Keaton will be portraying the role of Sophie*

**Jackson Murrieta**

*You're A Good Man, Charlie Brown*  
Based on the Comic Strip *Peanuts* by Charles M. Schultz  
Book, Music, and Lyrics by Clark Gesner  
*Murrieta will be portraying the role of Charlie Brown*

**Hannah Sedlacek**

*Summer and Smoke* by Tennessee Williams  
*Sedlacek will be portraying the role of Alma*

**Luke Creal**

*Three Days of Rain* by Richard Greenberg  
*Creal will be portraying the role of Pip*

**Cole Wagner**

*The Glass Menagerie* by Tennessee Williams  
*Wagner will be portraying the role of Jim, the Gentleman Caller*

**Joyce Lee**

*Vanya and Sonia and Masha and Spike* by Christopher Durang  
*Lee will be portraying the role of Sonia*

**T**his year's theatre season at Pepperdine is anything but normal. After we had selected our 2020–2021 season, COVID-19 forced us to alter our plans, along with the rest of our lives. It has not been our practice to stage a first-year showcase, but we decided to do so this year for two main reasons. First, we want our students to feel connected to Pepperdine and to have a sense of themselves as a cohort of actors who have been chosen specifically for our program. Second, we want to declare aloud that theatre will continue to have an impact on our society, and it will take more than a pandemic to silence our voices. Who better to make such a declaration than the newest members of our community?

The theme of this performance—“The Human Touch”—was born out of our current moment. With health and safety guidelines prohibiting us from engaging in nearly every kind of touch from shaking hands to handing over a credit card, or hugging a friend, or even kissing our grandparents on the cheek, we are using this showcase to highlight monologues that remind us of the power of human connection. You will see and hear monologues from a wide variety of plays ranging from Aeschylus's *The Persians*—the oldest extant play in the Western theatrical tradition, written in 472 BCE—to Annie Baker's *The Antipodes* and Lucas Hnath's *A Doll's House, Part 2*—both written in 2017. Across nearly 2,500 years of theatre, playwrights have not lost sight of the importance of human touch. Healing begins at the level of human interaction.

—Bradley Griffin, Director

# Artistic Staff

---

**Bradley W. Griffin** (Director) is a professor of theatre and the Divisional Dean of the Fine Arts Department at Pepperdine University. Since joining the faculty in 2005, he has directed many main stage theatre productions at Pepperdine, including *The Glass Menagerie*, Aeschylus' *The Persians*, *An Inspector Calls*, *A Flea in Her Ear*, *Xanadu*, *Oklahoma!*, *South Pacific*, *Crazy for You*, *The Threepenny Opera*, *Medea*, *Well*, and *Miss Bennet: Christmas at Pemberley*. Brad received his PhD in performance as public practice from the University of Texas at Austin in 2005. In August 2020, he became a Pepperdine parent when his daughter Anne Towles matriculated with the class of 2024. He is grateful for the love and support of his wife, Linn, and their two children, A.T. and Wright. Here's hoping that our online days are numbered, and that we will soon be together again, making live theatre for live audiences!



**Wesley Morrisey** (Stage Manager) is a junior production and design major with an emphasis in scenic and props design and a minor in Asian studies from Williston Park, NY. He has worked as Props Master for the student-led production of *Men On Boats*, and as the Technical Supervisor and Designer for the student-led Climate Change Theatre. His roles in Pepperdine productions include Assistant Sound Designer for the 2020 winter production of *Miss Bennet: Christmas at Pemberley*, the Assistant Scenic Designer and Deck Manager for the 2019 fall production of *Ragtime*, and Assistant Stage Manager for the 2019 fall production of *Futureproof*. Morrisey has

also served on the set crew for the productions of *Well*, *Die Fledermaus*, *Ragtime*, and *Falling*. He is a recipient of the Pepperdine Theatre Arts Scholarship. He would like to thank his friends and family, who support him in all his endeavors.

You can see more of his work at [wesleymorriseydesign.wixsite.com/wmdesign](https://wesleymorriseydesign.wixsite.com/wmdesign).

**Yelena Babinskaya** (Production Manager/Technical Producer) is a member of the Production Design faculty at Pepperdine. She works all over L.A. and the country as a Lighting, Scenic, and Costume designer. She holds an MFA from UCLA and a BA from UNC. Babinskaya is a member of United States Institute for Theatre Technology. She is very excited to be part of this adventure.



**Sean Allinson** (Sound Designer/ Recording Engineer) is a junior double major in political science and production/design with an emphasis in lighting and sound. He has worked backstage for theatre productions throughout high school, and has developed a love for tech. His Pepperdine credits include Assistant Stage Manager for the 2020 winter production of *Miss Bennet: Christmas at Pemberley*, Sound Designer for the 2019 spring opera *Die Fledermaus*, and Sound Mixer/Assistant Sound Designer for the 2019 fall production of *Ragtime*. He is

a recipient of the Ubben Endowed Theatre Scholarship as well as the Pepperdine Theatre Arts Scholarship courtesy of the Theatre Department. Allinson hopes that you enjoy the show!



**Stella Engel** (Assistant Stage Manager) is a first-year theatre production design major. She is from Searcy, AK, and this is her first production at Pepperdine University. In the past, she has worked as a Stage Manager and Costumer for *Into the Woods* and as a Costumer for *The Great Gatsby* at Searcy High School. Engel is a recipient of the Pepperdine Theatre Arts Scholarship.

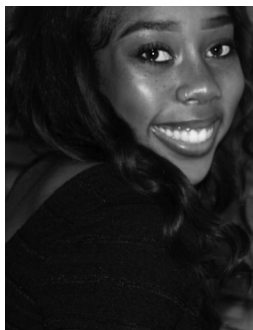


**Connor McKenzie** (Assistant Stage Manager) is a first-year theatre production design major with a planned minor in chemistry from the Newbury Park High School Technical Theatre CTA program in Newbury Park, CA. His previous credits include *Little Shop of Horrors*, *Cinderella: A British Pantomime* (dir. Marilyn Strange), and *The Book of Mormon* (Thousand Oaks Civic Arts Plaza). McKenzie would like to thank the Pepperdine Theatre Department, as well as his family.

# Cast

(in order of appearance)

---



**Talia Jackson** (Atossa) is a first-year musical theatre major from Rancho Palos Verdes, CA. This will be her acting debut in the Pepperdine Theatre Program. Jackson has led and performed in school productions, placed first in regional theatre competitions such as Drama Teacher's Association of Southern California, as well participated in her local theatre groups. These include roles such as Hope Caldwell in *Urinetown*, Angelina Hunter in *The Legend of Dusty Britches*, Tzeitel in *Fiddler on the Roof*, Ensemble in *Grease*, Ensemble in *Shrek the Musical*, Ensemble in *The Drowsy Chaperone*, Ensemble in *Peter Pan*, Speaking Ensemble, Dancing

Candles and Lead Taunting Gargoyle in *Beauty and the Beast*, Ensemble in *Joseph and the Amazing Technicolor Dreamcoat*, Boyland Sister in *Annie*, and Ophelia in *Hamlet*. She was also a Youth Leader and directed mini shows of *Shrek*, *Joseph and the Amazing Technicolor Dreamcoat*, *Annie*, and *Aladdin*. Jackson is a recipient of the Pepperdine Theatre Arts Scholarship. She would like to thank her friends and family, who support her in all his endeavors.



**Chloe Johnson** (Angela) is a first-year theatre major with an emphasis in Musical Theatre from Los Angeles, CA. This is her first performance in a Pepperdine production, and she is so excited and honored to be a part of such a wonderful community! Previously, she has performed as Mrs. Lovett in *Sweeney Todd*, Glinda in *The Wizard of Oz*, Ann Putnam in *The Crucible*, and Ross in *Macbeth*. For the role of Mrs. Lovett, Johnson received a National Youth Arts Award for Outstanding Lead Performance in a Musical, and for Glinda she received a Jerry Herman Award nomination for Best Supporting Actress. She was also a part of the finalist

group for Michael Feinstein's Songbook Academy 2019. Johnson would like to thank Dr. Griffin for such a great opportunity, her parents for always being so supportive of her, and all the new friends she has met here at Pepperdine for being so welcoming!



**Kayla Bryant** (Harper Pitt) is a first-year theatre arts major with an emphasis in musical theatre from Orange County, CA. This performance will mark Bryant's acting debut here at Pepperdine University, and she could not be more excited! Prior to Pepperdine, Bryant was the proud recipient of the Orange County Cappies Award for Best Leading Actress in a Musical, Best Supporting Actress in a Play, and Best Female Vocalist. She also earned the title of Orange County Artist of the Year Semi-Finalist, featured in the *OC Register*. Bryant is a recipient of the Pepperdine Theatre Arts Scholarship. She would like to thank all of her friends and family for all of their support, as well as her amazing directors and crew for making this show possible.

family for all of their support, as well as her amazing directors and crew for making this show possible.



**Matthew Dylan** (Mark Rothko) is a first-year theatre and screen arts major with an emphasis in acting. During Dylan's time in high school he performed in shows such as *The History Of The Devil*, *The Old Man* and *The Old Moon*, and *Metamorphoses*. He also has his own YouTube channel where he directs and produces his own short films. He is a recipient of the Pepperdine Theatre Arts Scholarship. Dylan would like to thank God for creating every opportunity and his family and friends who love and support him.



**Peyton Walker** (Sarah) is a first-year theatre arts major with an emphasis in acting. This will be Walker's Pepperdine Theatre debut. Some of Peyton's favorite past roles include Daisy in *The Great Gatsby*, Viola De Lesseps in *Shakespeare in Love*, Molly in *The Mousetrap*, and Raymonde in *A Flea in Her Ear*. She has also appeared in various short films and commercials. Walker is thrilled to be a part of the Pepperdine theatre family and to hone her craft among so many talented individuals. She would like to thank her friends, family, professors, and peers for all of their love and support.



**Zoe Gordon** (Nora Helmer) is a first-year theatre and screen arts major with an acting emphasis from Las Vegas, NV. This will be her first production at Pepperdine University. Gordon attended Las Vegas Academy of the Arts (LVA) for three years as a theatre major; during her time there she starred in *Comedy of Errors* and two student-directed showcases. She has also worked on makeup crew for the musicals *Cinderella* and *42nd Street*. Additionally, Gordon took the role of assistant lead for the play *Antigone's* costume crew. She has also assisted film majors at LVA by acting in student-directed short films. Gordon is a recipient of the Pepperdine Theatre Arts Scholarship. Gordon would like to thank her family, friends, and teachers for encouraging her to pursue her artistic aspirations.

Gordon would like to thank her family, friends, and teachers for encouraging her to pursue her artistic aspirations.



**Chloe Higgins** (Jane) is first-year who is double majoring in theatre arts with an emphasis in musical theatre and psychology. Higgins was very involved with theatre in high school, serving as thespian president and playing roles in several plays, her favorite being Dotty in *Noises Off!*. This is her first production with Pepperdine, and she is ecstatic to get involved with other performances and events. She'd like to thank the amazing staff at Pepperdine for overcoming these challenging circumstances, and for striving to recreate the college experience for as many students as possible.



**Holly Jackson** (Lisa Kron) is a first-year musical theatre and film studies major from Lenexa, KS. This will be her Pepperdine debut! Back home, Jackson has done shows in the Kansas City area including Jan in *Grease*, Lilith in *She Kills Monsters*, Chiffon in *Little Shop of Horrors*, Pilar in *Legally Blonde*, and Judine in *Hairspray*. Since joining Pepperdine, she has been recruited as the Video Production Producer for the choral music department and is a Theatre and Music Scholarship recipient. Jackson would like to thank God, her family and friends for all of their continued support. She hopes you have a great time, stay blessed and enjoy the show!



*Sweeney Todd*. Condon would like to thank her mom, dad, and Meryl for their constant support and love! Enjoy the show!

**Carly Shea Condon** (Blanche) is a first-year theatre major with an emphasis in acting. This will be her first performance as a Pepperdine Wave! At her alma mater Chaminade College Preparatory, Condon served as head of the Hair and Makeup crew for every show during her four years as well as performed in many productions. Some of her favorite roles include Gertrude in *Hamlet*, Glory in *Almost Maine*, the Wicked Witch in *The Wizard of Oz*, and Mercy Lewis in *The Crucible*. She has also served as a crew member for many shows including *Romeo and Juliet*, *The 25th Annual Putnam County Spelling Bee*, *Macbeth*, and



the entertainment industry. She is excited for her first show at Pepperdine and is so grateful to be a part of such an amazing group. Ferreira would like to thank Dr. Griffin, Wesley, as well as the rest of the production team. She would also like to thank her parents for all their love and support. Enjoy the show!

**Raquel Ferreira** (Emmy Helmer) is a first-year theatre major at Pepperdine University. She currently lives in Southwest Florida but is originally from Portugal. She has been involved in several productions in the United States as well as in Europe. Some of Ferreira's recent performances include Dolores in *Gypsy*, Ms. Bell in *Fame*, Susan in *Don't Drink the Water*, and Peggy in *Camp Rock*. Ferreira has certificates from the Royal Academy of Dance and Trinity College from England. She loves performing on stage and is excited to pursue an acting career in the future. Recently, Ferreira studied at the Yale University Summer Acting Conservatory with professionals working in



**Hannah Keaton** (Sophie) is a first-year theatre arts major with an emphasis in screen arts from Franklin Park, NJ. Keaton is delighted to be part of this showcase. She participated in eight productions at the Peddie School including *1776*, *The Wolves*, *Roald Dahl's Willy Wonka*, *Fiddler on the Roof*, *Rent*, *Avenue Q*, *Les Misérables*, and *Legally Blonde*. She also previously appeared in the Arts Council of Princeton's production of *Peter Pan* and Westminster Conservatory's Shakespeare in Music. Keaton would like to say special thanks to everyone at the theatre department for this incredible opportunity and experience!



**Jackson Murrieta** (Charlie Brown) is a first-year theatre arts major with a musical theatre emphasis from Albuquerque, NM. This will be his debut performance at Pepperdine University. Murrieta has performed in many high school and community theatre productions. Among these, some of his most recent roles include Adam in *Freaky Friday*, Specs in *Newsies*, and Lumière in *Beauty and the Beast*. Murrieta would like to thank his friends and family for supporting him and hopes you enjoy the show!



**Hannah Sedlacek** (Alma) is a first-year theatre major with an emphasis in musical theatre. This will be her debut Pepperdine University performance. She has performed with the Cedar Ridge Visual and Performing Arts Academy as Lydia in *Big Love*, Rosaline in *Love's Labour's Lost*, Alice in *Thoroughly Modern Millie*, and most recently earned a Heller Award for Young Artists nomination for Best Actress in a Supporting Role for her performance as Brooke Wyndham in *Legally Blonde*. Sedlacek was also a member of the Long Center's Select Ensemble in Austin, TX from 2018–2020 and performed at the Texas Medal of the Arts with the group in 2019. She would like to thank her family for their unconditional love and support and for all their encouragement over the years.



**Luke Creal** (Pip) is first-year theatre major with an emphasis in acting from Carlsbad, CA. He loves the beach and hanging out with friends. Creal's most recent roles include the extravagant Russian dance instructor Boris Kolenkhov in *You Can't Take It With You*; and as the vapid, teen heart-throb Conrad Birdie in *Bye Bye Birdie*. He also has travelled to many places around the world, including Thailand and England. Creal would like to thank the theatre program and his parents for everything they have done.



**Cole Wagner** (Jim) is a first-year theatre and screen arts major from Portland, OR, and this is his first performance at Pepperdine. A few of his previous shows include *Into the Woods*, *Clue*, *The Game's Afoot*, *The 25th Annual Putnam County Spelling Bee*, and *Noises Off*. He is a recipient of the Pepperdine Theatre Arts Scholarship. Wagner would like to give a shout out to his classmates of 2024 and he can't wait to meet to be on campus with them.



**Joyce Lee** (Sonia) is a first-year theatre and screen arts major from Chicago, IL. Ever since she was little Lee loved to perform; whether it was ballet or painting or filming murder myseries with her friends, Lee always had an interest in the arts. It wasn't until the fall of 2016 when she fell in love with the art of acting through her dance company, as she had to portray the character of Snow White's Prince Charming. She then started taking classes at Acting Studio Chicago, Second City and the American Academy of Dramatic Arts. She's also had the privilege of performing the role of Prince Charming with her dance studio in Norway, Italy, New York,

Chicago, St. Louis, the Chicago Thanksgiving Parade, and more.

---

# Acknowledgement & Thanks:

Melanie Watnick  
Rick Aglietti  
Cathy Thomas-Grant

## PEPPERDINE FINE ARTS DIVISION UPCOMING DIGITAL PERFORMANCES

### **POLAR BEARS, BLACK BOYS & PRAIRIE FRINGED ORCHIDS**

**by Vincent Terrell Durham**

Nic Few, Director

A liberal white couple host a cocktail party at their renovated Harlem brownstone. The guests include a Black Lives Matter activist, his white partner, a Harlem native named Shemeka, and the mother of a slain 12-year-old black boy. As the precarious party devolves into a tempest of assumptions and accusations, topics range from underweight polar bears, saving the planet, and gentrification, to racial identity and protecting the lives of black boys.

*This play contains profanity; recommended for ages 13+.*

**Thursday, October 1– Friday, October 2, 2020 • 7:30 PM**

**Saturday, October 3, 2020 • 2 PM**

*There will be a talkback after the Saturday, October 3 performance.*

**Digital performances are free, but advanced registration is required.**

**Visit [arts.pepperdine.edu](http://arts.pepperdine.edu) for more information.**

### **FINE ARTS CABARET**

Kelly Todd, Director

A multi-day show featuring diverse performances  
by various Pepperdine Theatre students.

**Thursday, November 12–Friday, November 13, 2020 • 7:30 PM**

**Saturday, November 14, 2020 • 2 PM**

**Digital performances are free, but advanced registration is required.**

**Visit [arts.pepperdine.edu](http://arts.pepperdine.edu) for more information.**

*To stay updated on all upcoming events at Center for the Arts, please join our email list by visiting [arts.pepperdine.edu/visit/email-list.htm](http://arts.pepperdine.edu/visit/email-list.htm).*

---

**For more information, call the Center for the Arts Box Office  
at 310.506.4522, or visit: [arts.pepperdine.edu](http://arts.pepperdine.edu).**

# PEPPERDINE

24255 Pacific Coast Hwy, Malibu, California 90263

310.506.4000 • [www.pepperdine.edu](http://www.pepperdine.edu)

## WE GRATEFULLY ACKNOWLEDGE OUR ANNUAL DONORS

### DISTINGUISHED BENEFACTORS

Howard and Roberta Ahmanson  
Kenny G. Endowed Scholarship  
(Kenneth B. Gorelick)  
David Ferguson  
Luciana\* and Daniel Forge  
David Huenergardt\*  
The Jonathan Club  
Allan Kwong Family  
Annette Oltmans and J.O.  
Oltmans II  
Mary Pickford Foundation  
Pickford-Stotsenberg Endowment  
Chloe H. Ross  
Flora L. Thornton\*  
Laurie and Jeff Ubben

### CENTER FOR THE ARTS CHANCELLOR'S CIRCLE

#### Performance Sponsors

The Office of the Chancellor of  
Pepperdine University  
Anne Marie and Mitch Bredefeld  
Crest Associates  
Melanie and Richard Flamminio  
David Huenergardt\*  
Billie Milam Weisman  
Lisa Smith Wengler

### Supporting Sponsors

Kathy and John Danhaki  
Mary and Tom Hawkins  
Michelle and Mark Hiepler  
Ellen and Doug Weitman

### Contributing Sponsors

The Anza Hotel  
Rick and Shelley Bayer  
Andy and Debby Benton  
G. Beverly Bergmann  
Marguerite Brown  
Kathy and Lou Colombano  
Food Fetish Catering  
Maureen Grace  
Ambassador Glen Holden  
Marcia and Hank Lawson  
Emily and Sheldon Lodmer  
Laurel and Michael Marion  
Marmalade Cafe  
Paula and Rick Marrs  
Marnie and Tom Mitze  
Lucy and Tim Perrin  
Nancy and Jeff Pippin  
Diane E. Reilly  
Helene and Robert Schacter  
Steve and Paula Mae Schwartz  
Jim and Gail Wilburn

### FRIENDS OF THE THEATRE MEMBERS

**Diamond Theatre Members**  
Mary Ellen and Marshall Waller

**Platinum Theatre Members**  
Jackie and Bob Bigelow  
Amanda Carungi  
Jan and Tim Willis

**Gold Theatre Members**  
Nancy and Dan Bishop  
Pamela and Raymond Hebel  
Connie and Tim Horton  
Rosemarie and Gerhard Ihde  
Dawn Pettersen  
Jerry Warkans

**Sterling Theatre Members**  
Paula and Steve Burtch  
Linda and John Katch  
Elisa and Steven Klein  
Ken Kofman  
Carole Mason-Stark and  
Dan Stark  
Constance Slade  
Mary Ellen and Marshall Waller  
Orinda and Phillip Weiss

**Silver Theatre Members**  
Pam and Mike Davis  
Juanita Kamm  
Lattis Richards  
Marilynn Santman

*Donor listings as of  
9/16/20.*

*\*in memoriam*

---

The Friends of the Theatre supports theatre students by hosting master classes, providing potluck lunches during production weeks, financially supporting Pepperdine's participation in the Edinburgh Festival Fringe, and more. For additional information on the Friends of the Theatre and to learn more about how to get involved, contact the Lisa Smith Wengler Center for the Arts at 310.506.4594.

The Mary Pickford Foundation and the late Dorothy and Edward Stotsenberg of Malibu have provided generous support to student scholarships for Pepperdine University fine arts majors.

A gift to Seaver College's Fine Arts Division helps to enhance the arts and advance excellence in teaching. If you have an interest in supporting the fine arts at Pepperdine, please contact Lou Drobnick, Senior Vice Chancellor for Advancement and Public Affairs, at 310.506.6432 or email [lou.drobnick@pepperdine.edu](mailto:lou.drobnick@pepperdine.edu).